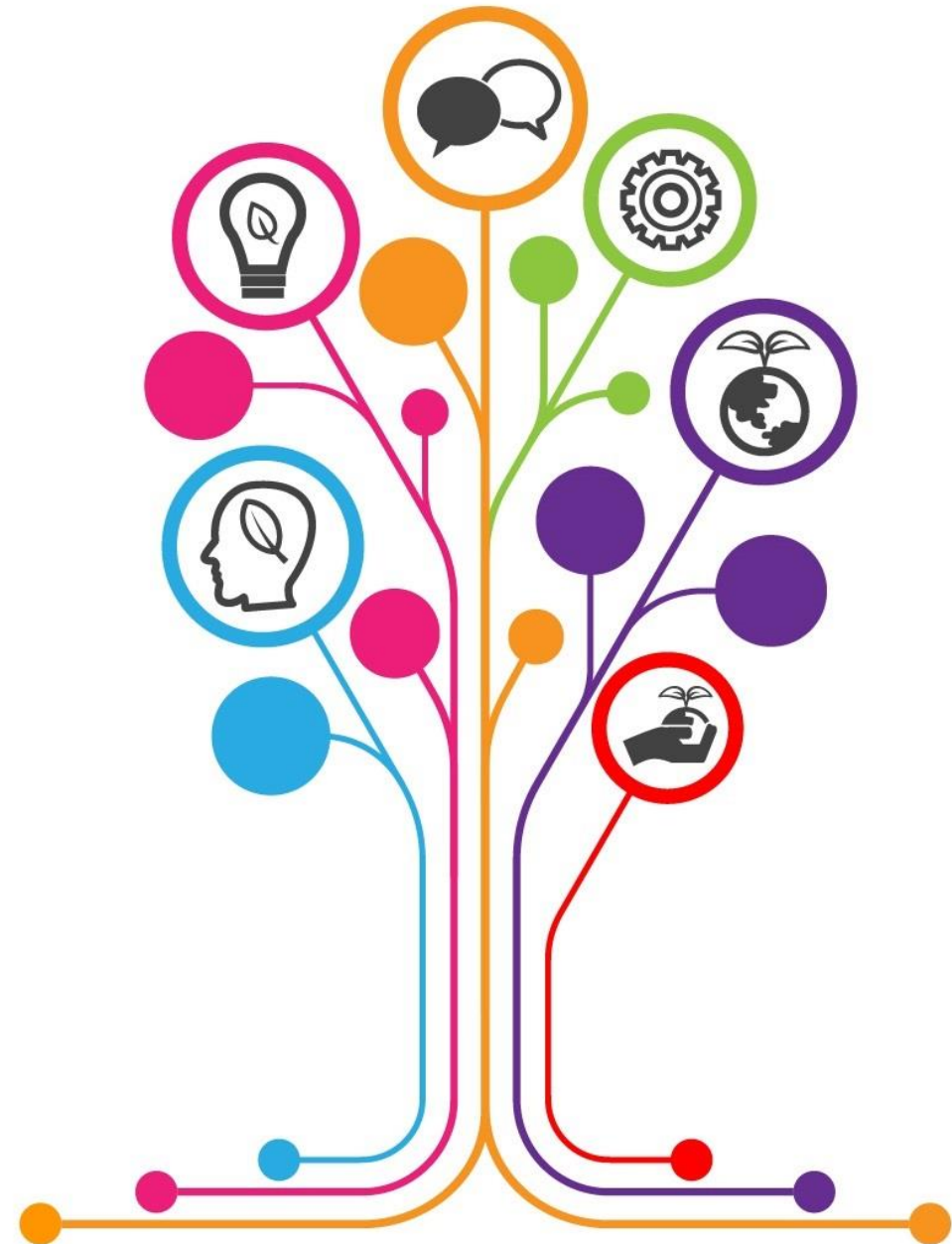




Soft Landscape Workshop 2020

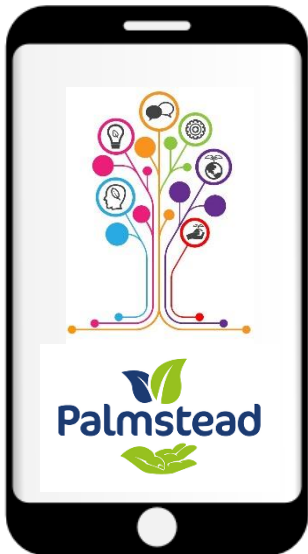
Thinking outside the pot



Housekeeping



- No fire drills planned
- Emergency exits
- Muster – car park



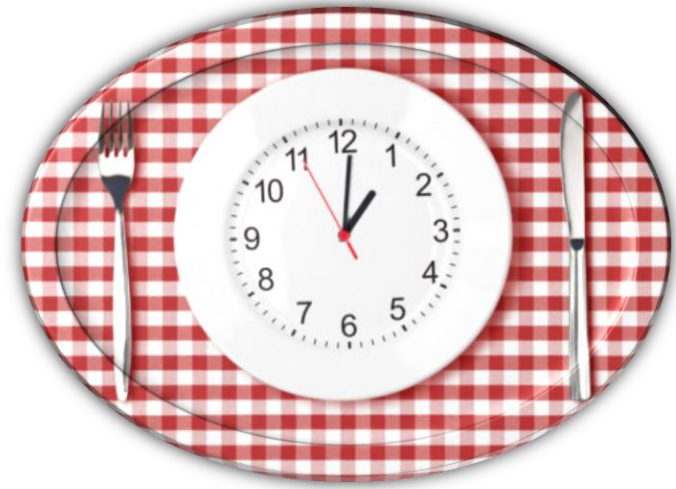
- Phones silenced please
- @Palmsteadmedia



#palmsteadslw

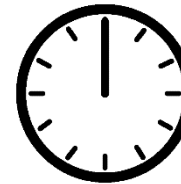


@palmstead



Lunch 13.00 for an hour.

Meals for requested diets in Canterbury



Please keep to timings

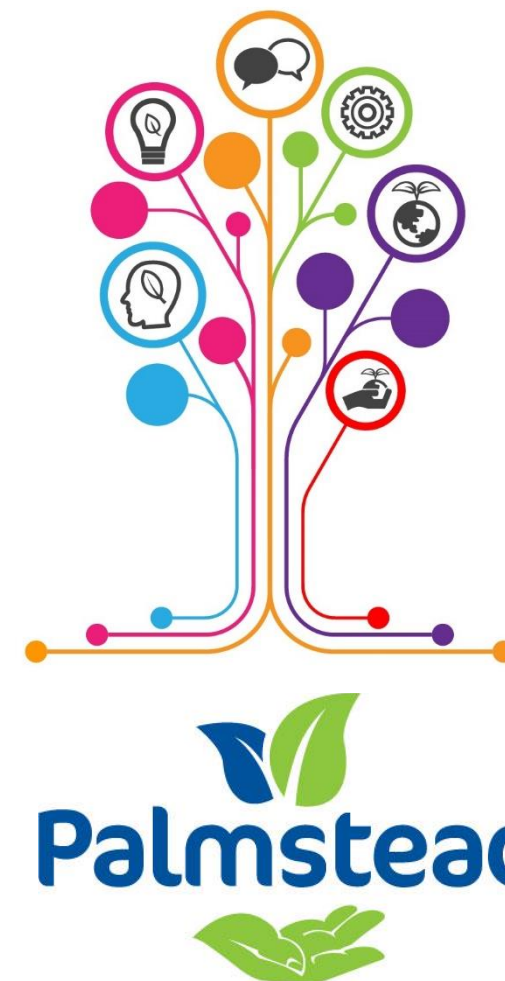




It's all about the roots



Thinking outside the pot



Packard Publishing



Future Flora

Selecting plants for climate change:

Please see the poster in the
exhibition space

www.futureflora.org

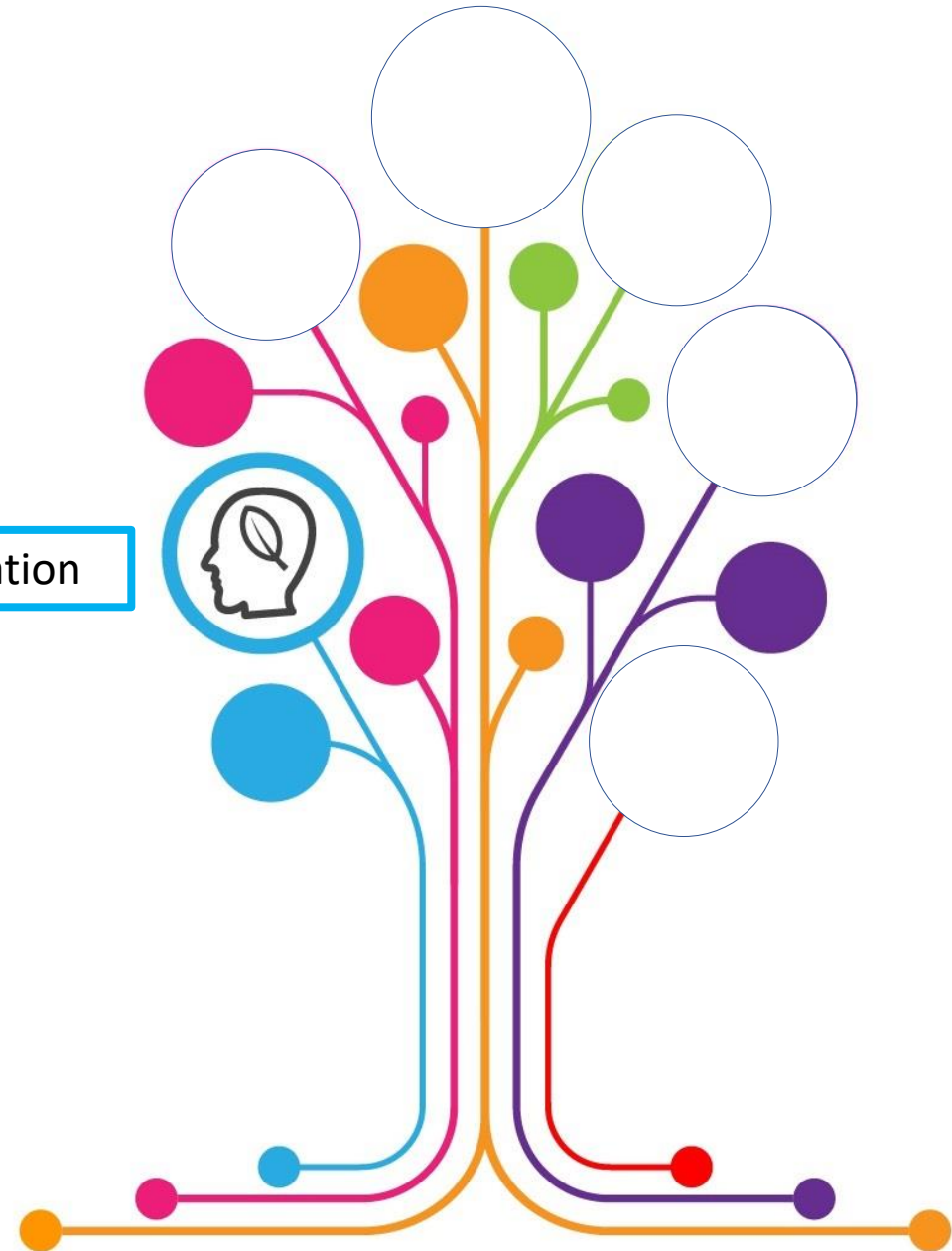
Future Flora is a project to provide a biosecure way to grow, procure and specify plants that can be used by everyone in the horticulture and landscape sectors, from nurseries through to landscape contractors, designers and managers.

- **Invitation to visit the nursery is always open and you will be warmly welcomed**
- **Please make an appointment for undivided customer attention**



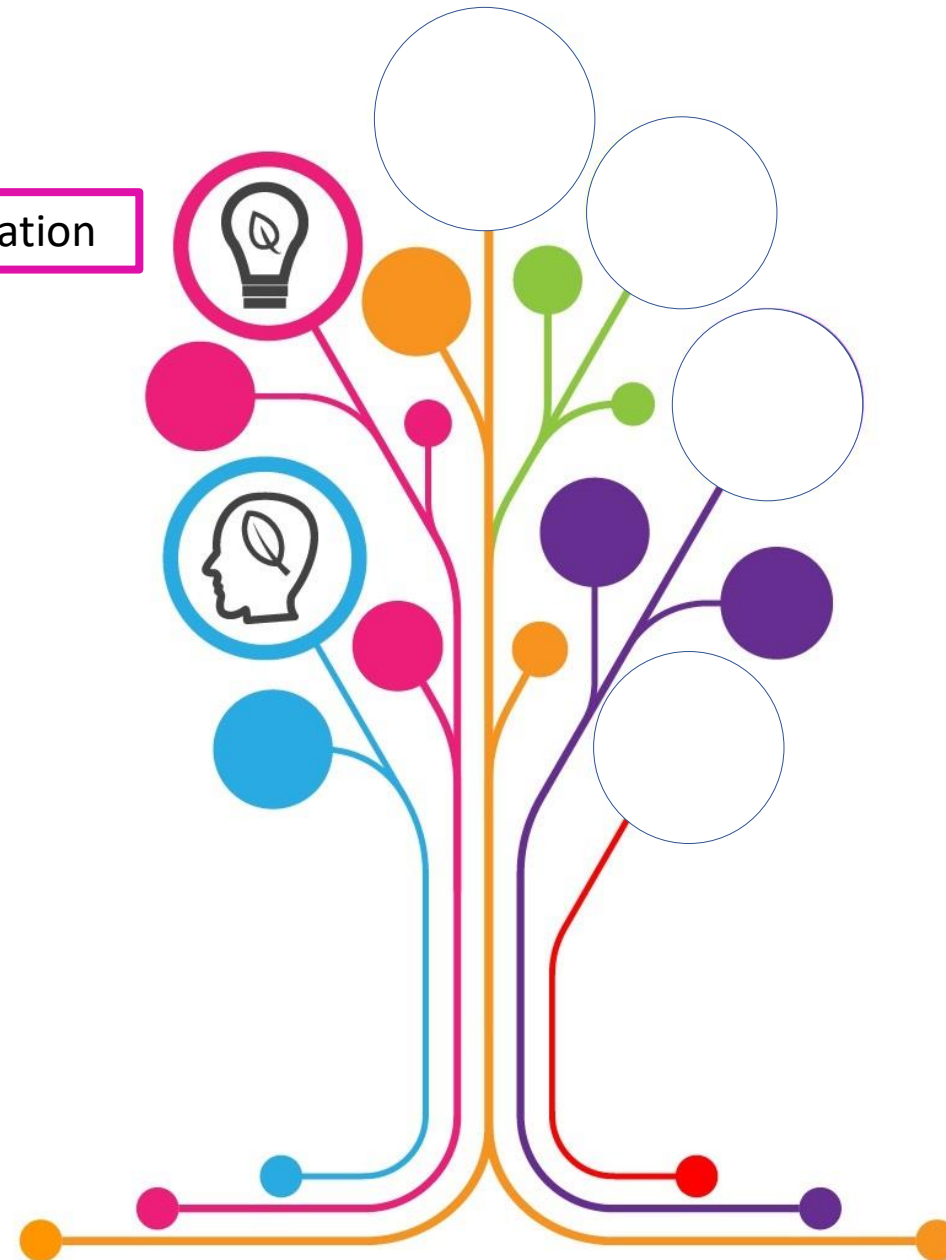


Education





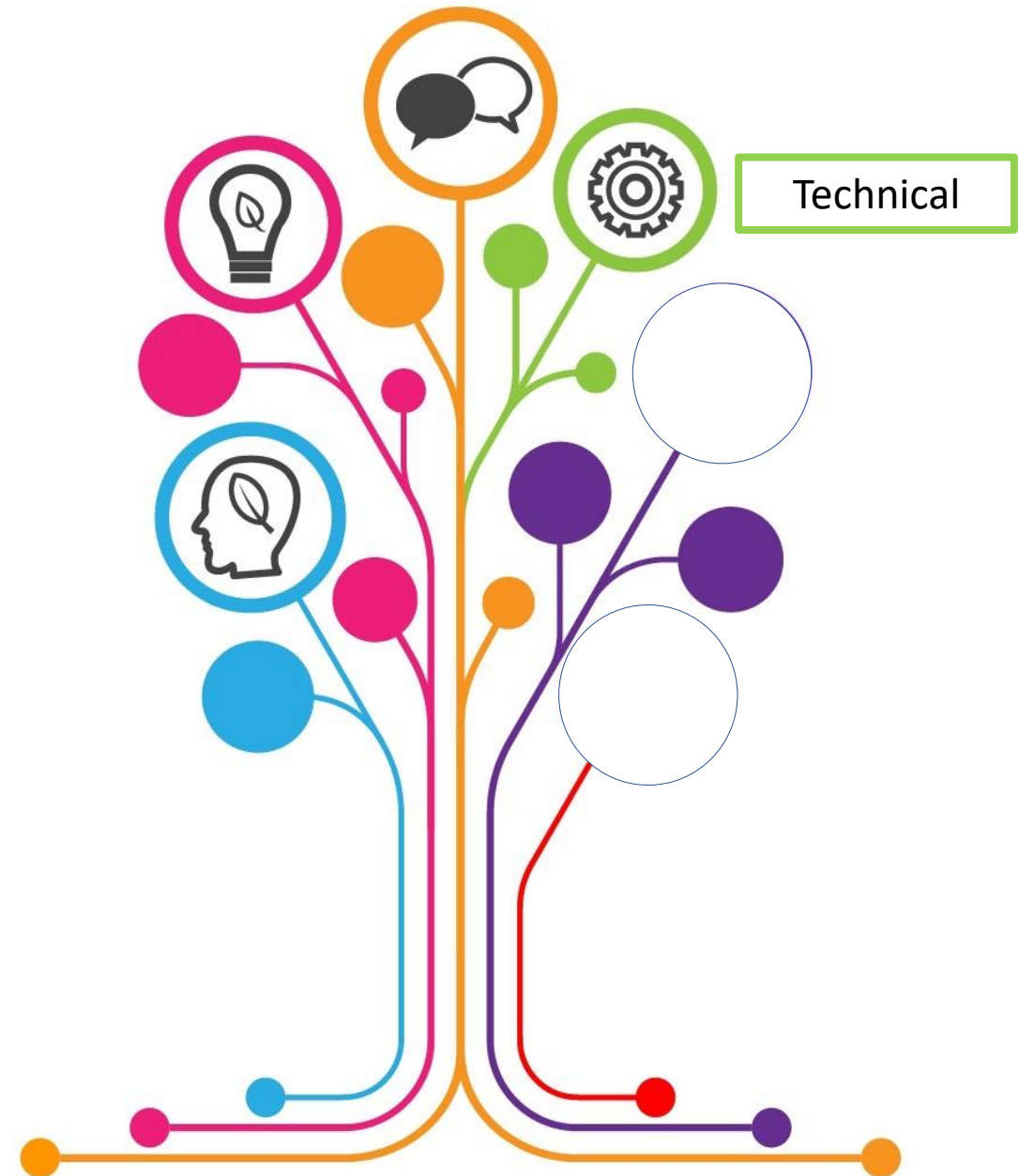
Inspiration

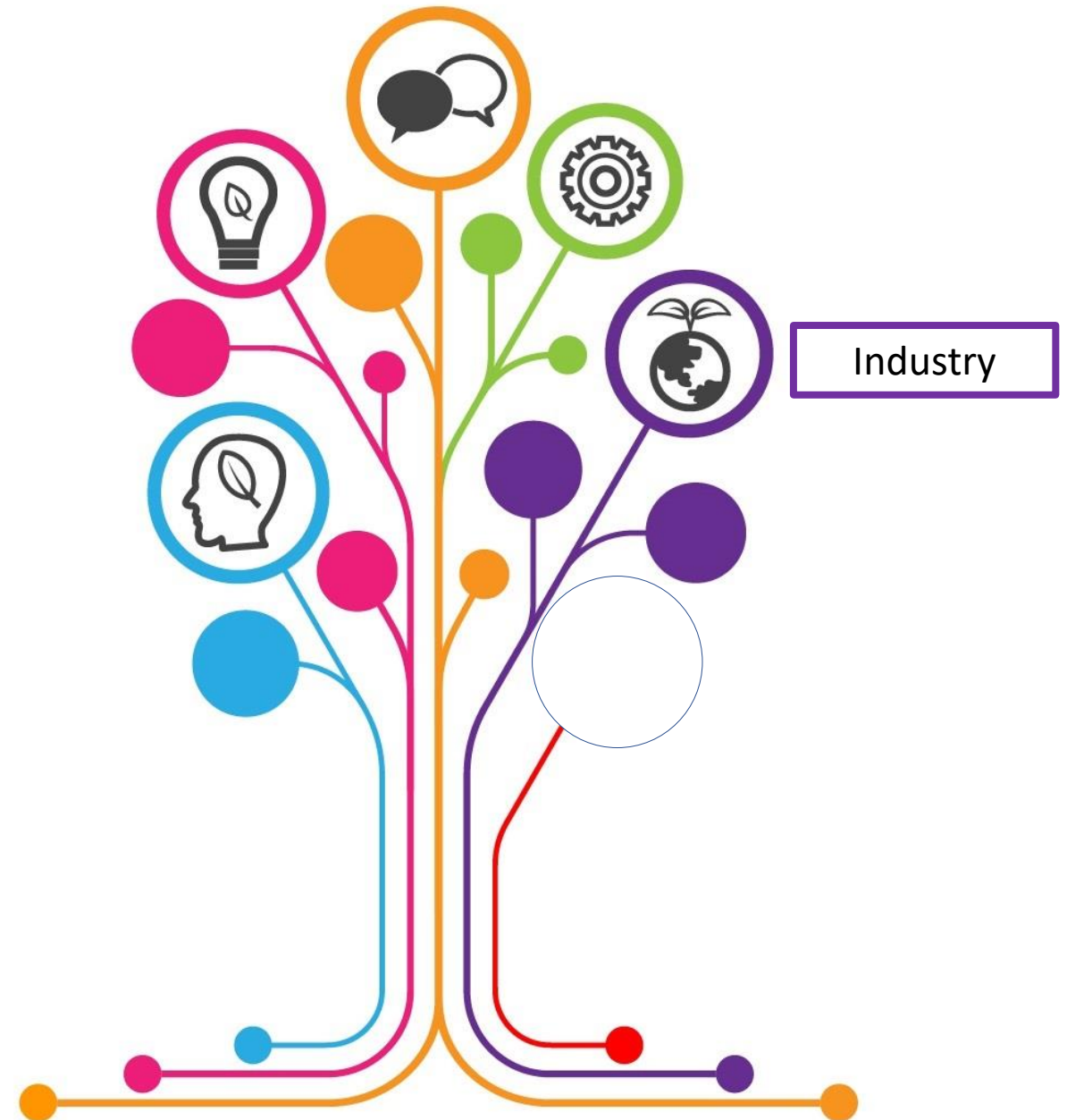




Networking



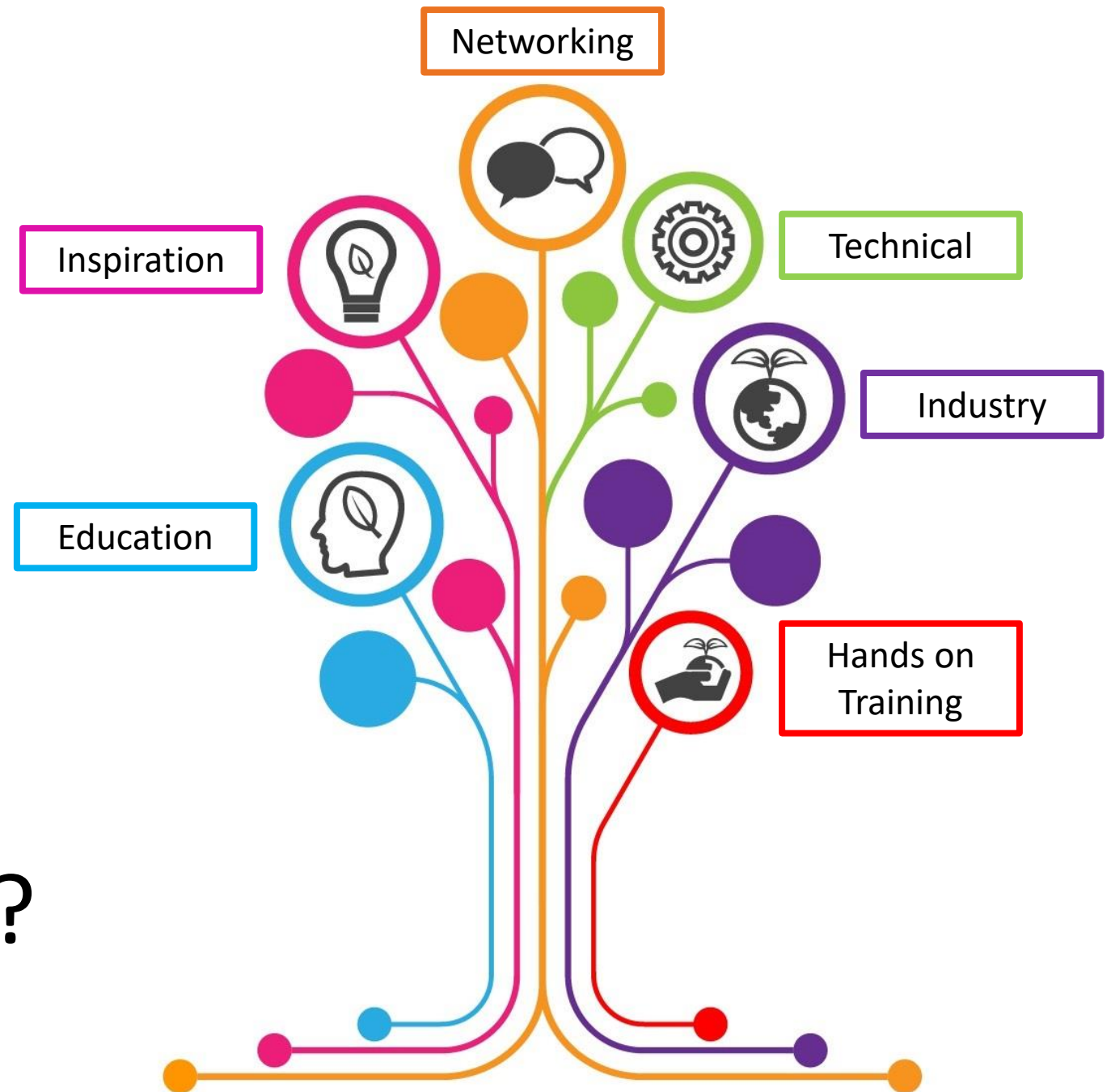








So
Why are we here?



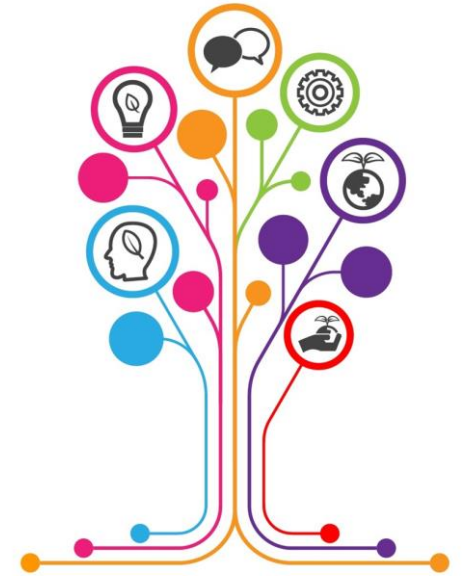


SKOLSTREJK
FÖR
KLIMATET



Why are we here? What can we do?

- Change is coming –
 - CLIMATE BREAKDOWN
 - EXTREME WEATHER
 - ECOLOGICAL BREAKDOWN
- Join drive to reduce waste, reduce energy, reduce food
- Don't waste – power, food, time,
- Reduce Reuse Repair Recycle
 - - consume less - WELCOME THE CIRCULAR ECONOMY
- Reduce or limit your flying





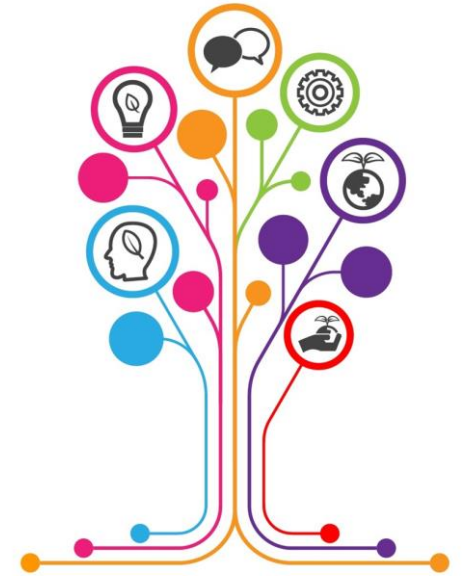






Why are we here? What can we do?

- Change is coming –
 - CLIMATE BREAKDOWN
 - EXTREME WEATHER
 - ECOLOGICAL BREAKDOWN
- Join drive to reduce waste, reduce energy, reduce food
- Don't waste – power, food, time,
- Reduce Reuse Repair Recycle
 - - consume less - WELCOME THE CIRCULAR ECONOMY
- Reduce or limit your flying
- Eat less red meat and eat more plants
- NO TO BUSINESS AS USUAL ?
- Use your vote & spending power



TO STOP CLIMATE COLLAPSE, WE MUST END **CAPITALISM**



But can we maintain
our livelihoods in a
circular economy?

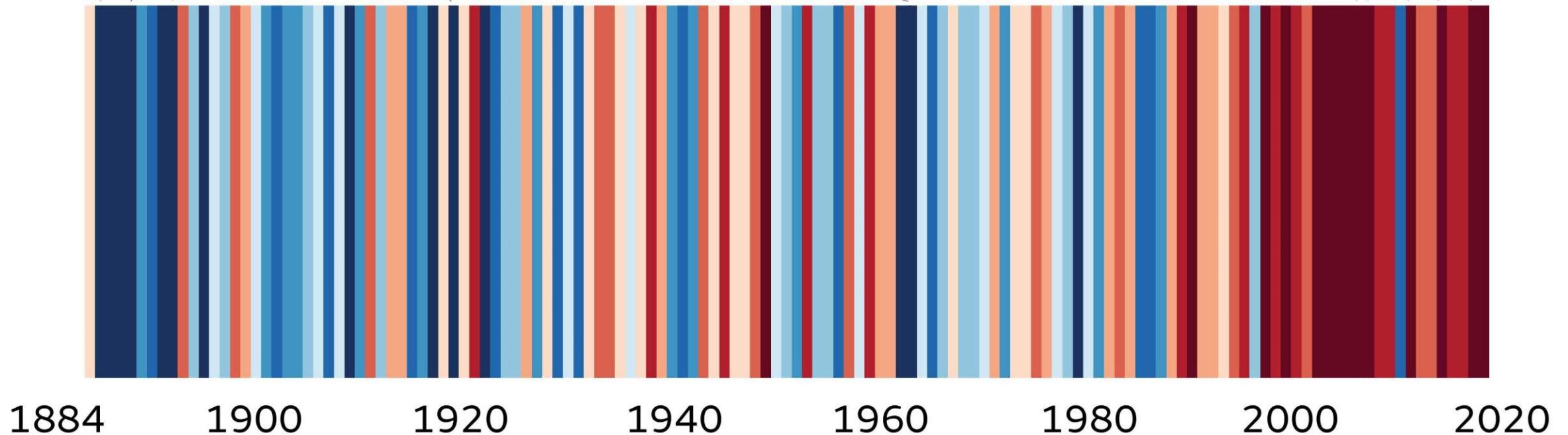
UK annual temperature

5 coolest years

1892, 1888, 1885, 1963, 1919

5 warmest years

2014, 2006, 2011, 2007, 2017

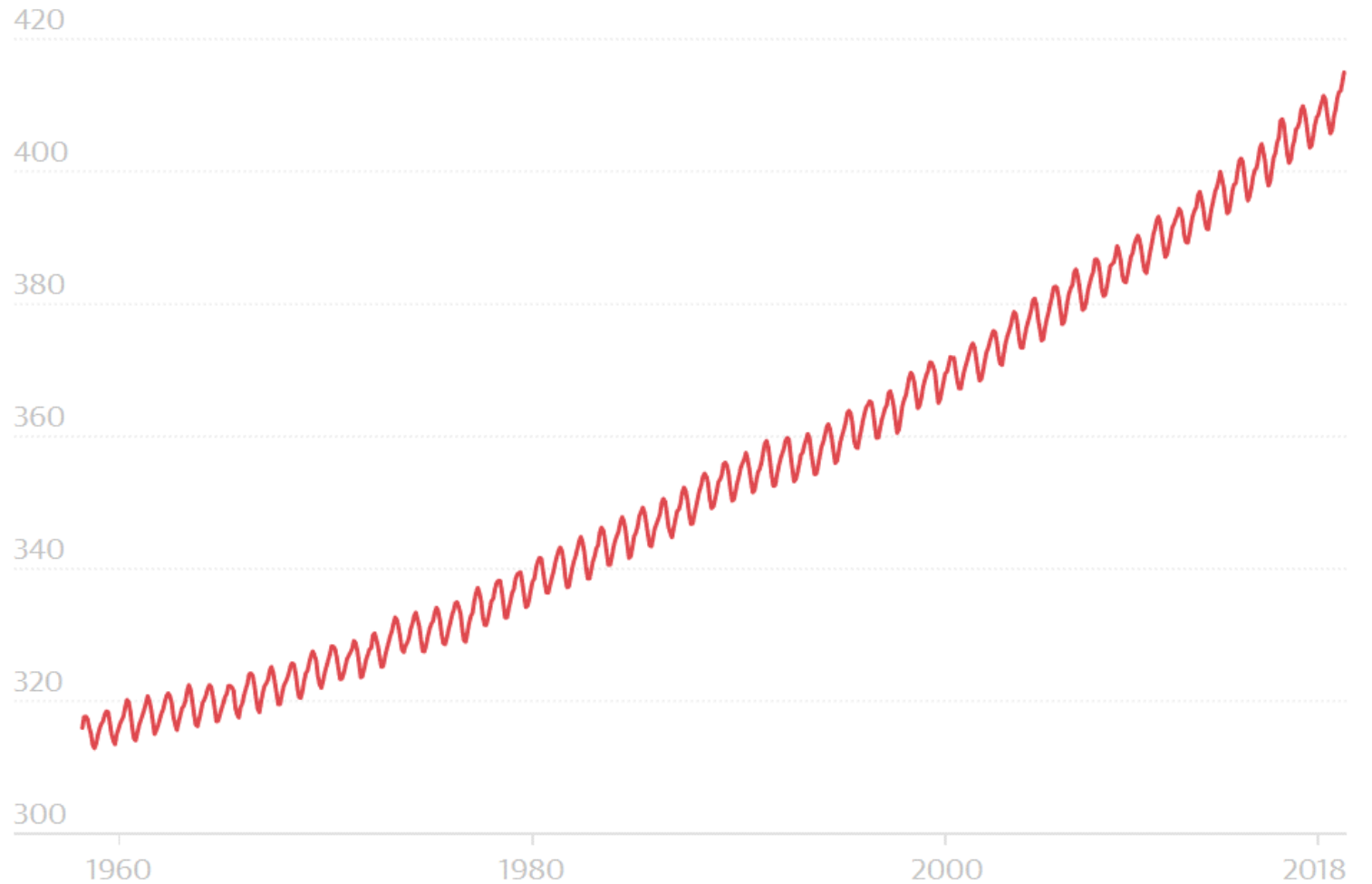


CO₂ now over
400ppm

it's never been
that high for
10,000 years

Atmospheric CO₂ rose to a record level in May

CO₂ levels (ppm) are being driven up by human activities but vary with the season



Guardian graphic | Source: US Earth System Research Laboratory, measurements from Mauna Loa, Hawaii

DAY ZERO

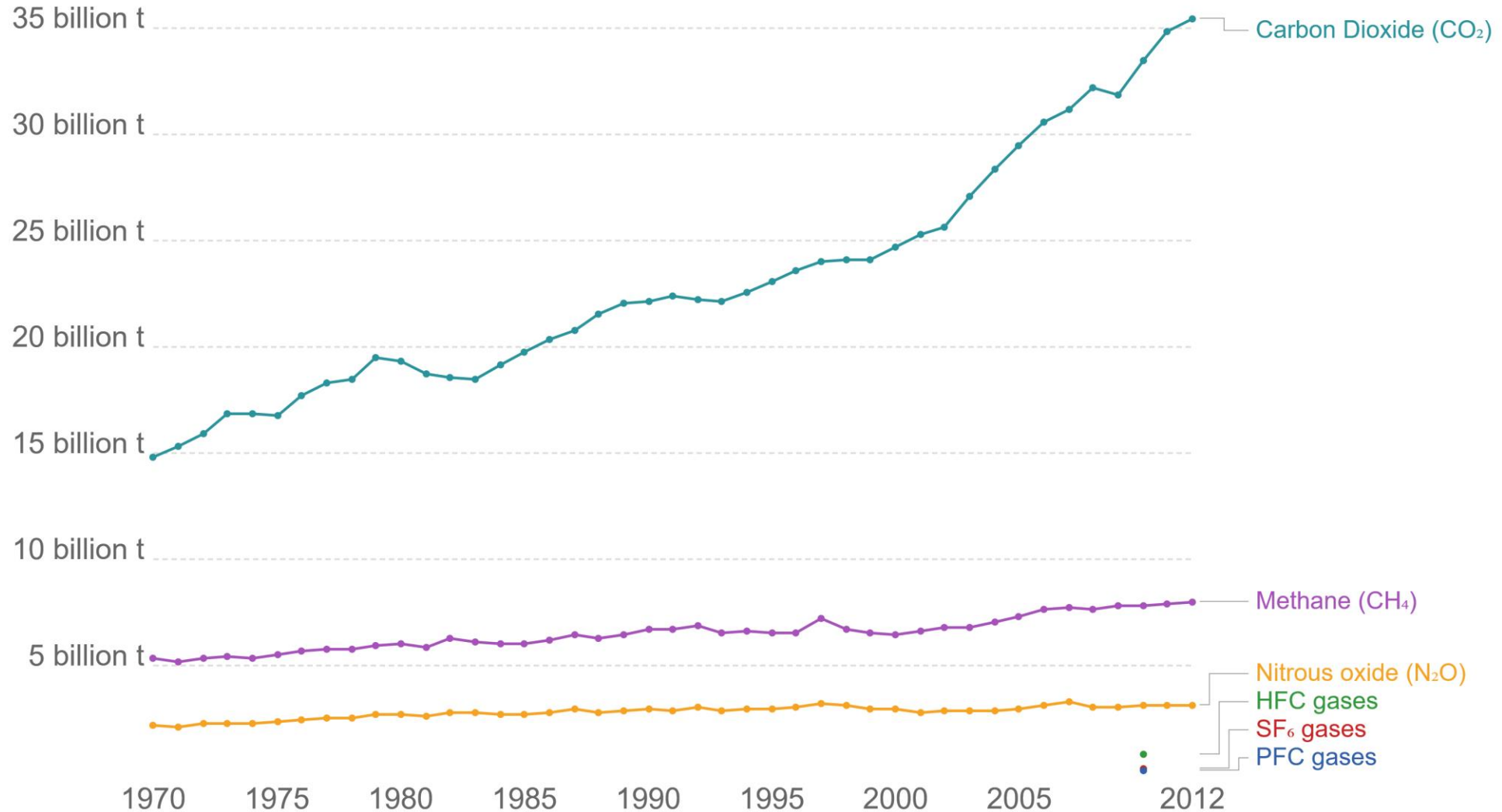
IS WHEN THE WATER RUNS OUT



Greenhouse gas emissions by gas, World

Our World
in Data

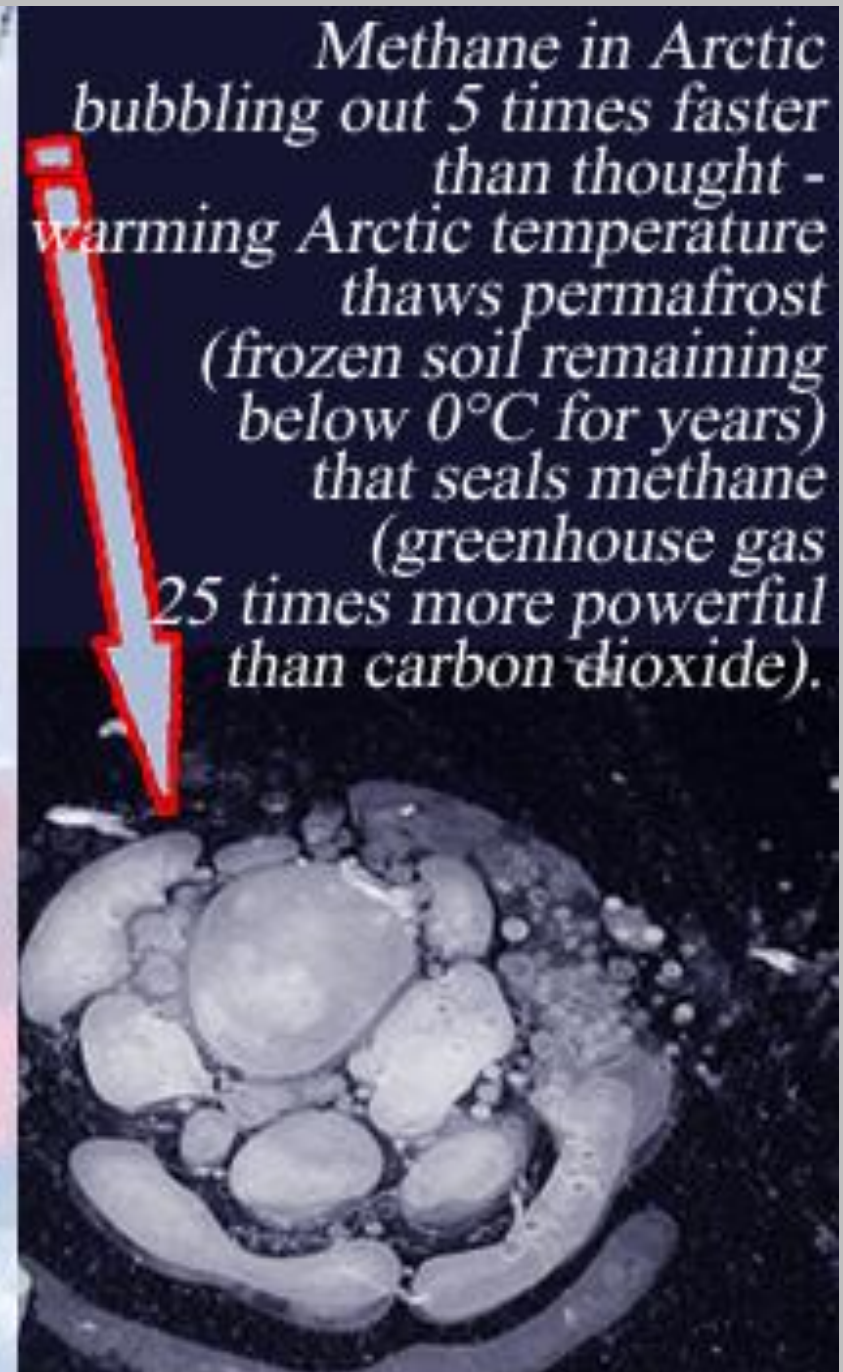
Global greenhouse gas emissions by gas source, measured in tonnes of carbon dioxide equivalents (tCO₂e). Gases are converted to their CO₂e values based on their global warming potential factors. HFC, PFC and SF₆ are collectively known as 'F-gases'.



Source: European Commission (JRC); Netherlands Environmental Assessment Agency (PBL); EDGAR
OurWorldInData.org/co2-and-other-greenhouse-gas-emissions/ • CC BY

Permafrost
thawing
releasing
methane

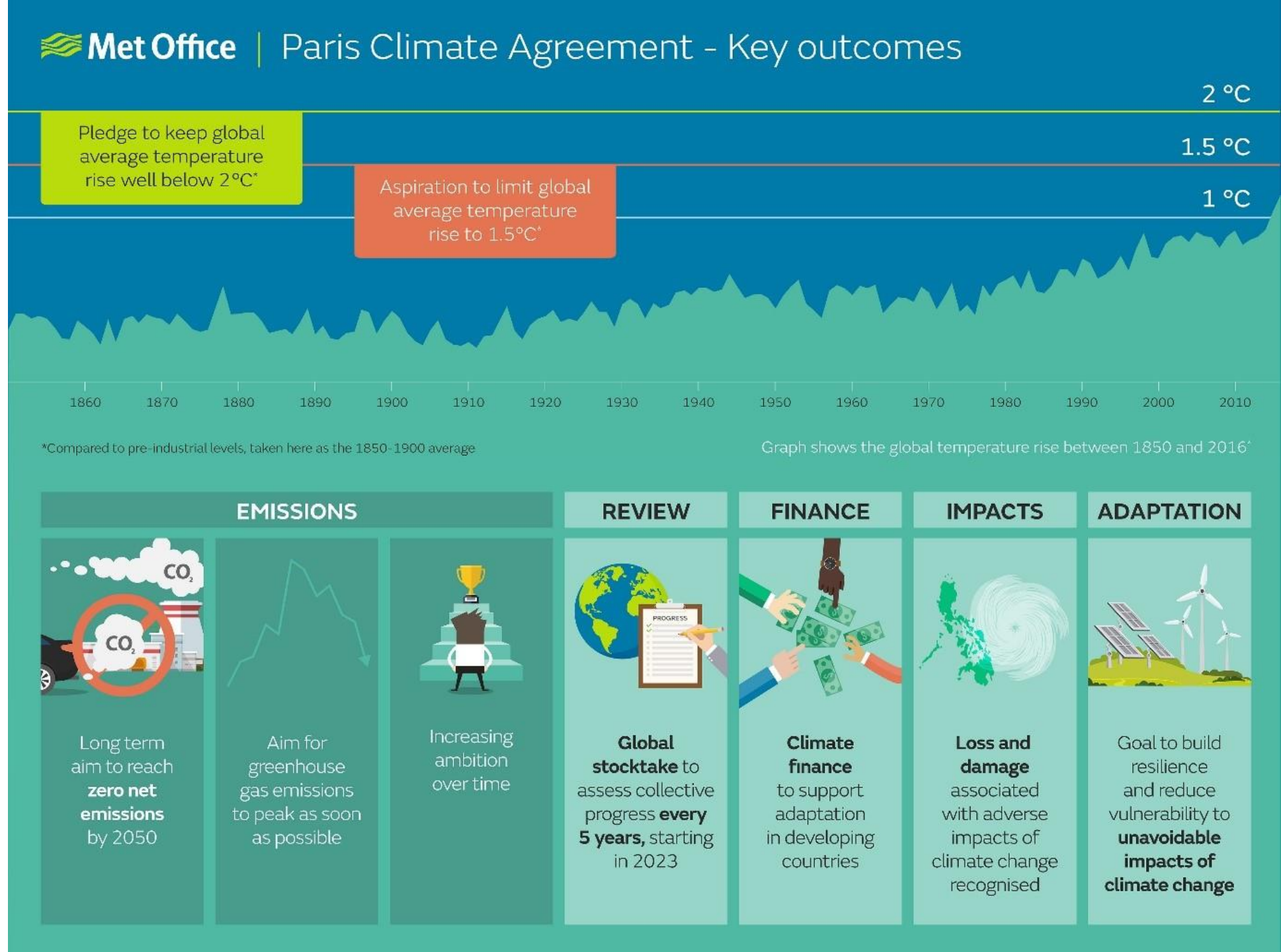
A Tipping
point?



*Methane in Arctic
bubbling out 5 times faster
than thought -
warming Arctic temperature
thaws permafrost
(frozen soil remaining
below 0°C for years)
that seals methane
(greenhouse gas
25 times more powerful
than carbon dioxide).*

Paris Agreement struggling to hit targets

1.5C° a dream?





Carbon neutral
by 2050?

Don't wait for
our leaders to
lead





What is our carbon footprint?

We need to measure it to be able to manage & reduce it



Nursery facing the future challenges

Thinking outside the pot

- Plastic use – making pots more recyclable
- Packaging waste – reviewing & reducing
- Peat use – reduce and/or move to alternative
- Pesticide use – armoury reducing = more biologicals
- Energy use – reduce, move to renewables
- Transport miles – reduce plant miles, grow more on the nursery
- Plants for the future fit for purpose

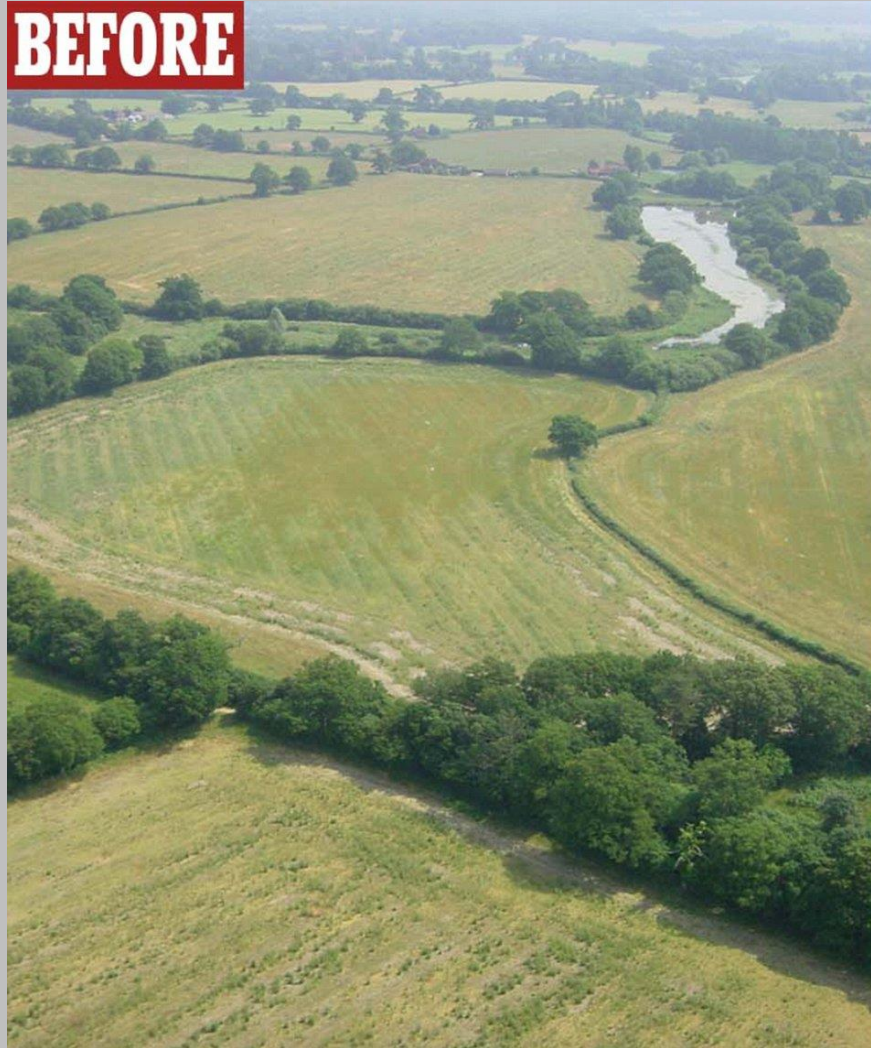
Future not certain and the road ahead not defined however, Palmstead has always listened to customers and adapted to meet their needs

The value of one single tree.

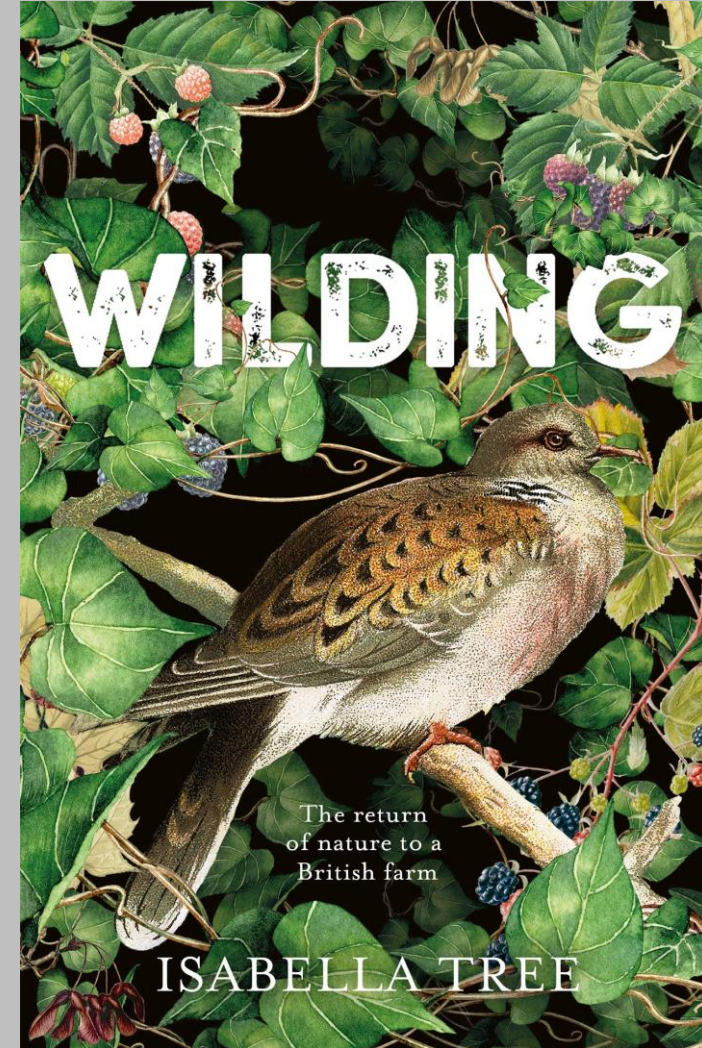


Rewilding of less productive land - Knepp

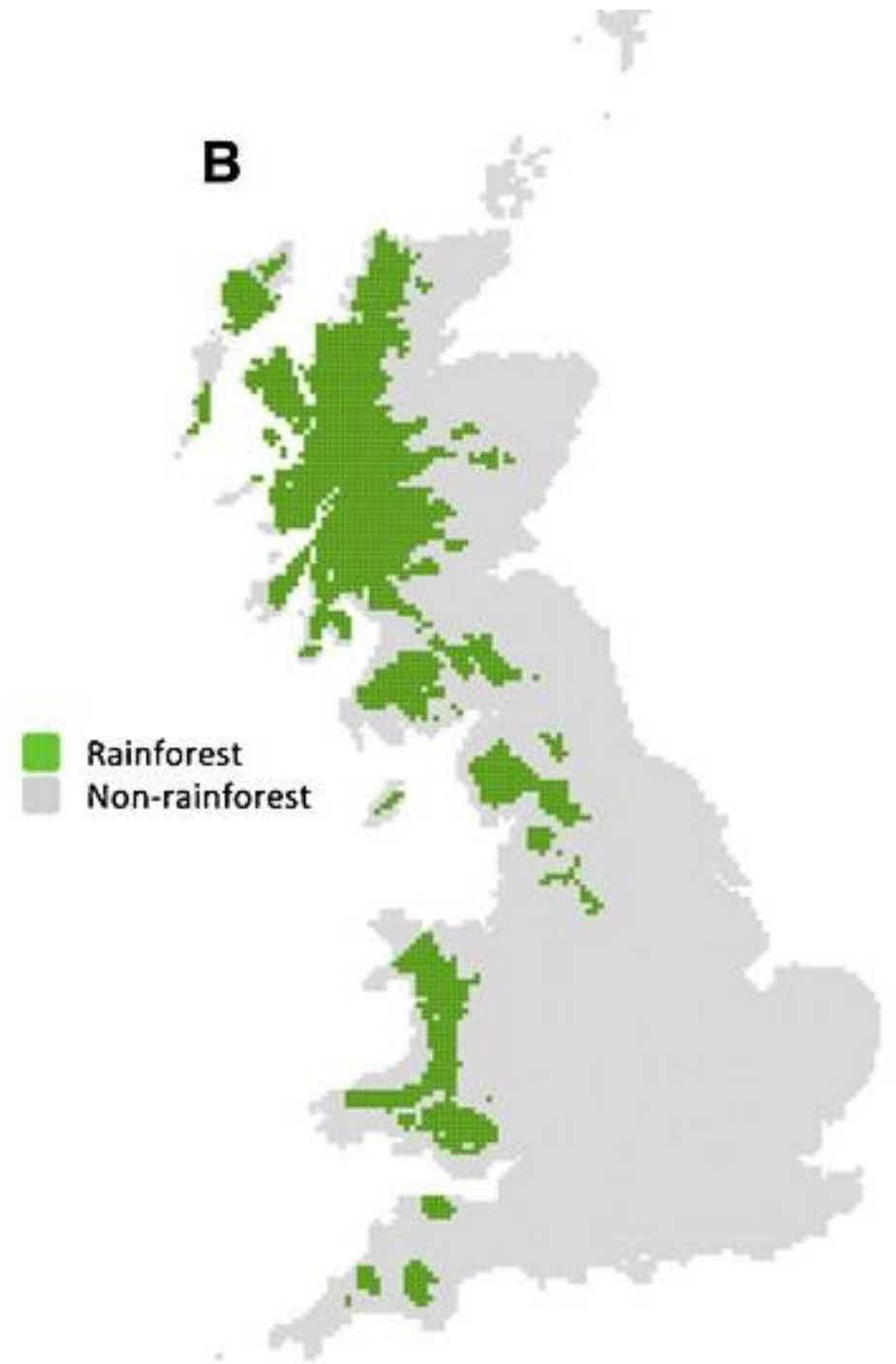
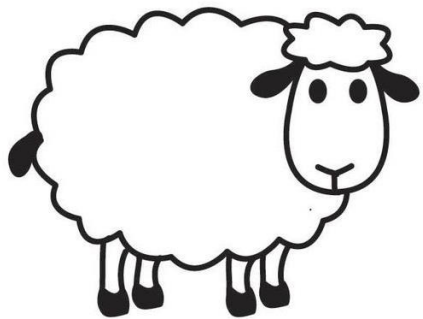
BEFORE



AFTER



Rewilding of our
uplands, & developing
the **suitable** land for
temperate rain forests
- for trees and carbon
capture



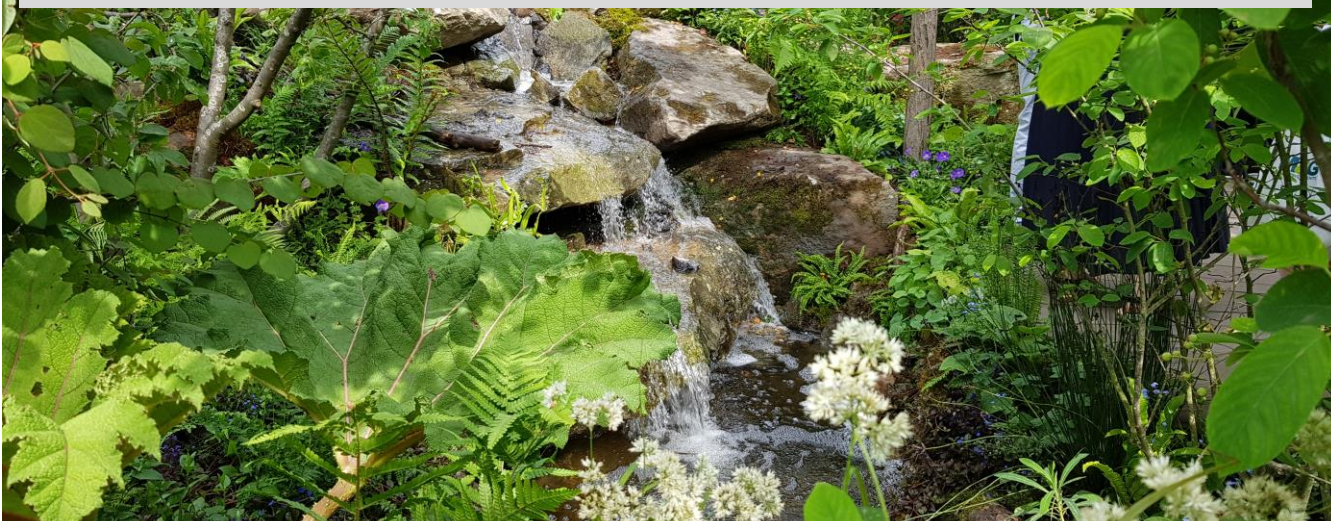
We make places better for people and wildlife

- We can reconnect people to the natural world





RHS Chelsea 2019 Back to nature garden



Sir David Attenborough at the Landscape Institute Awards 2019





Tony Kirkham



Marian Boswall



Peter Gibbs



Anna French



John Weir



Henrik Sjöman



Dr Debbie Bartlett



Jacquelin Clay



Sophie Leguil



Arit Anderson



Noel Farrer

Thinking outside the pot

