



Dan Pearson Studio



















DONATED BY THE FAMILY OF GEORGE HARRISON







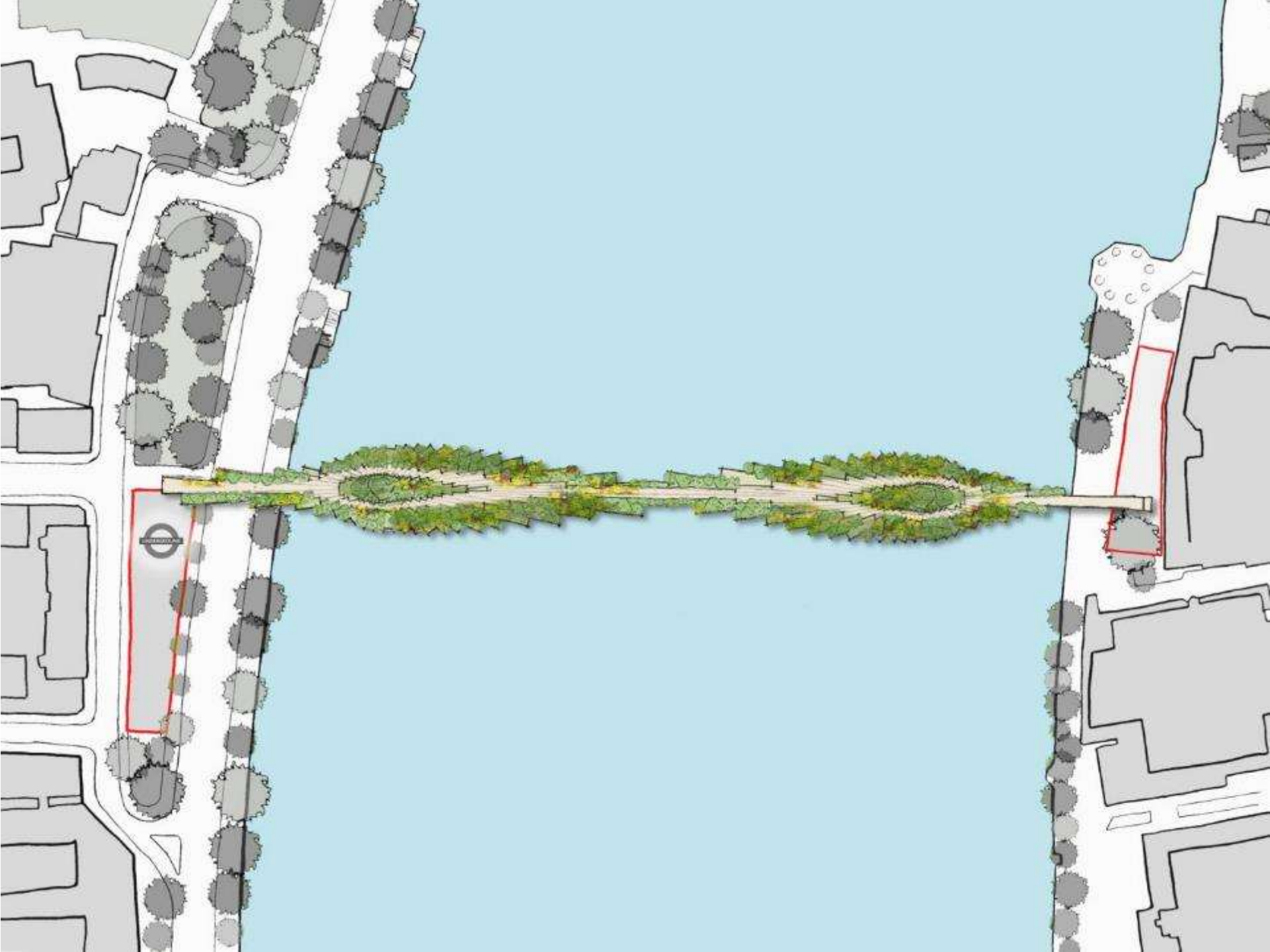




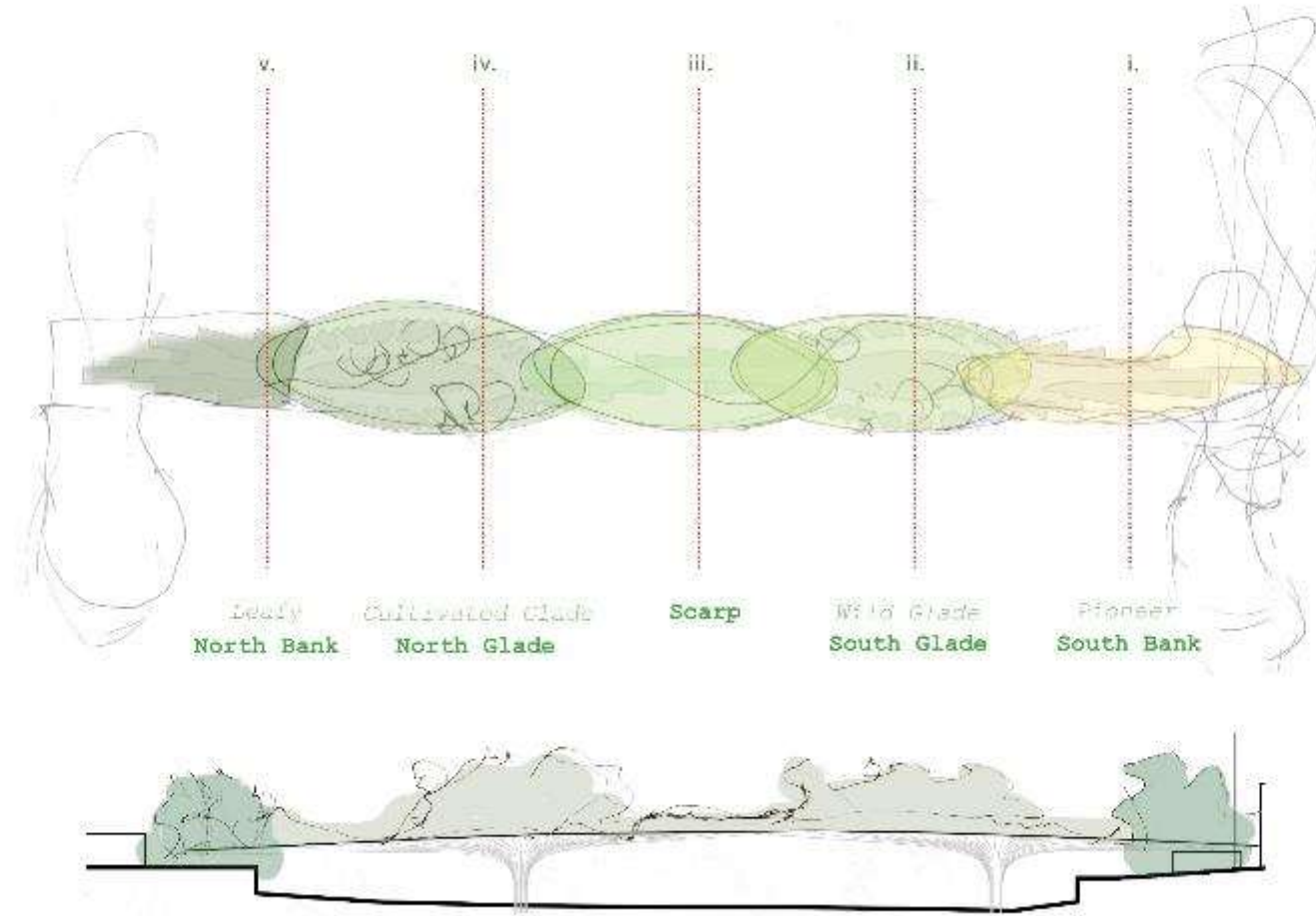


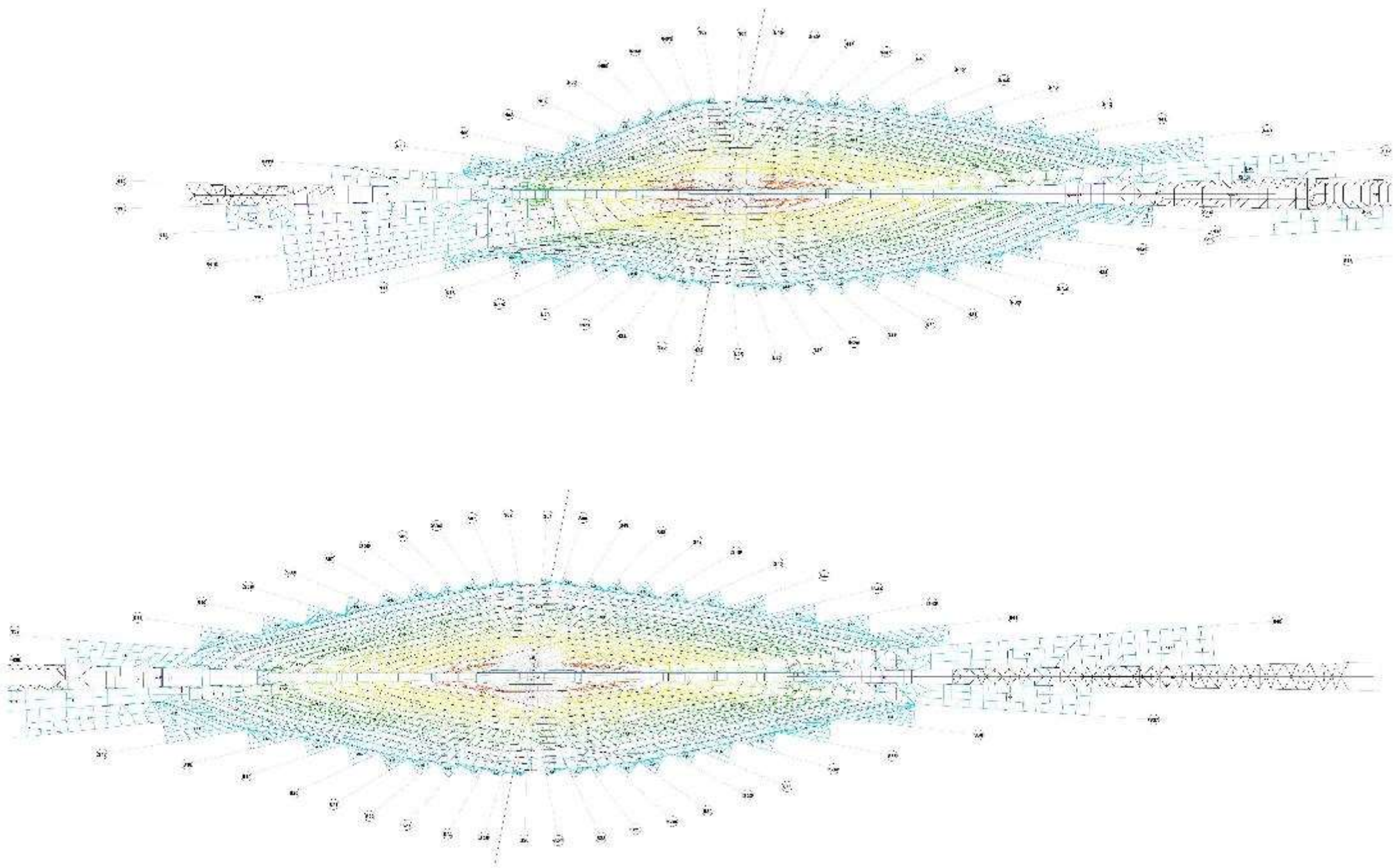
The Garden Bridge

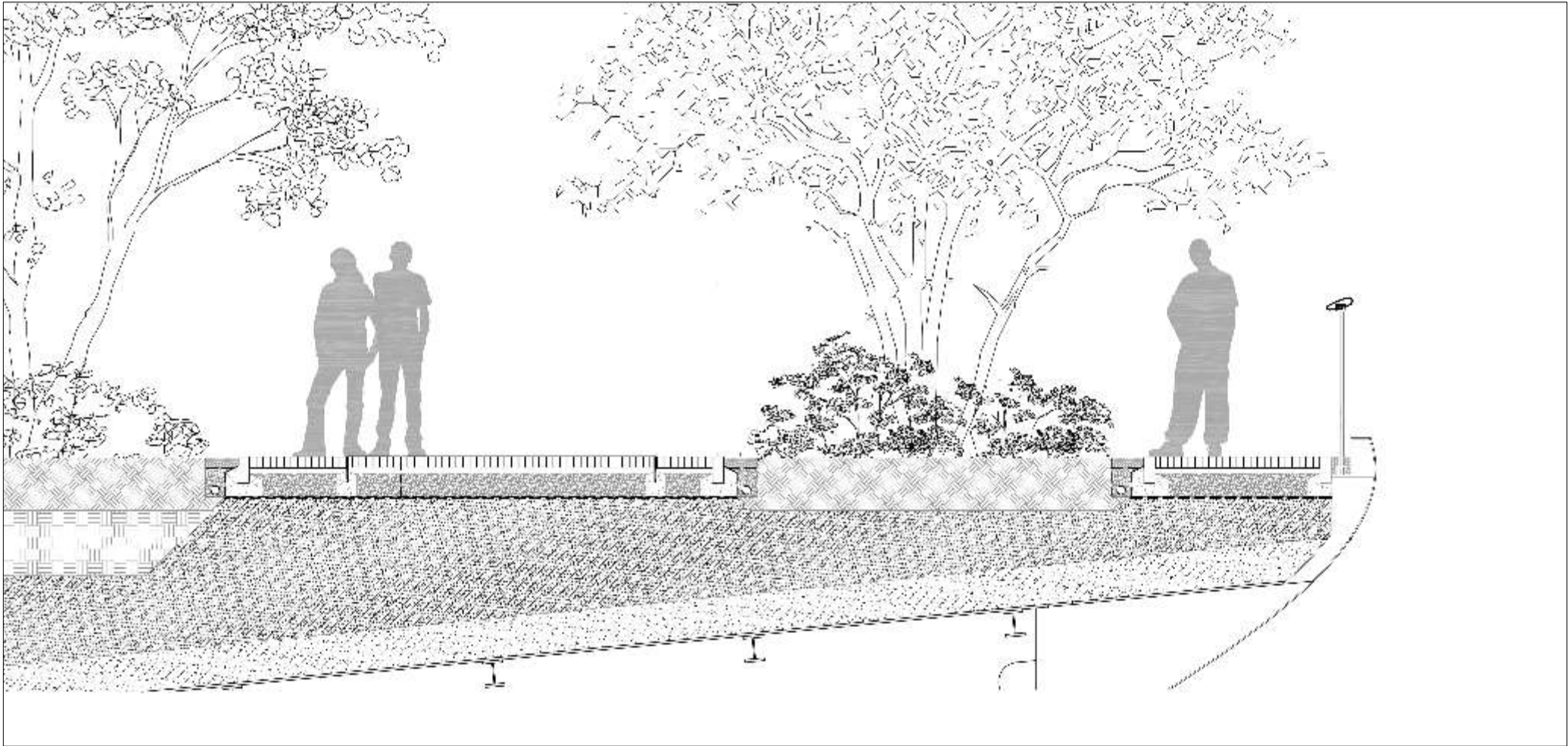




Concept







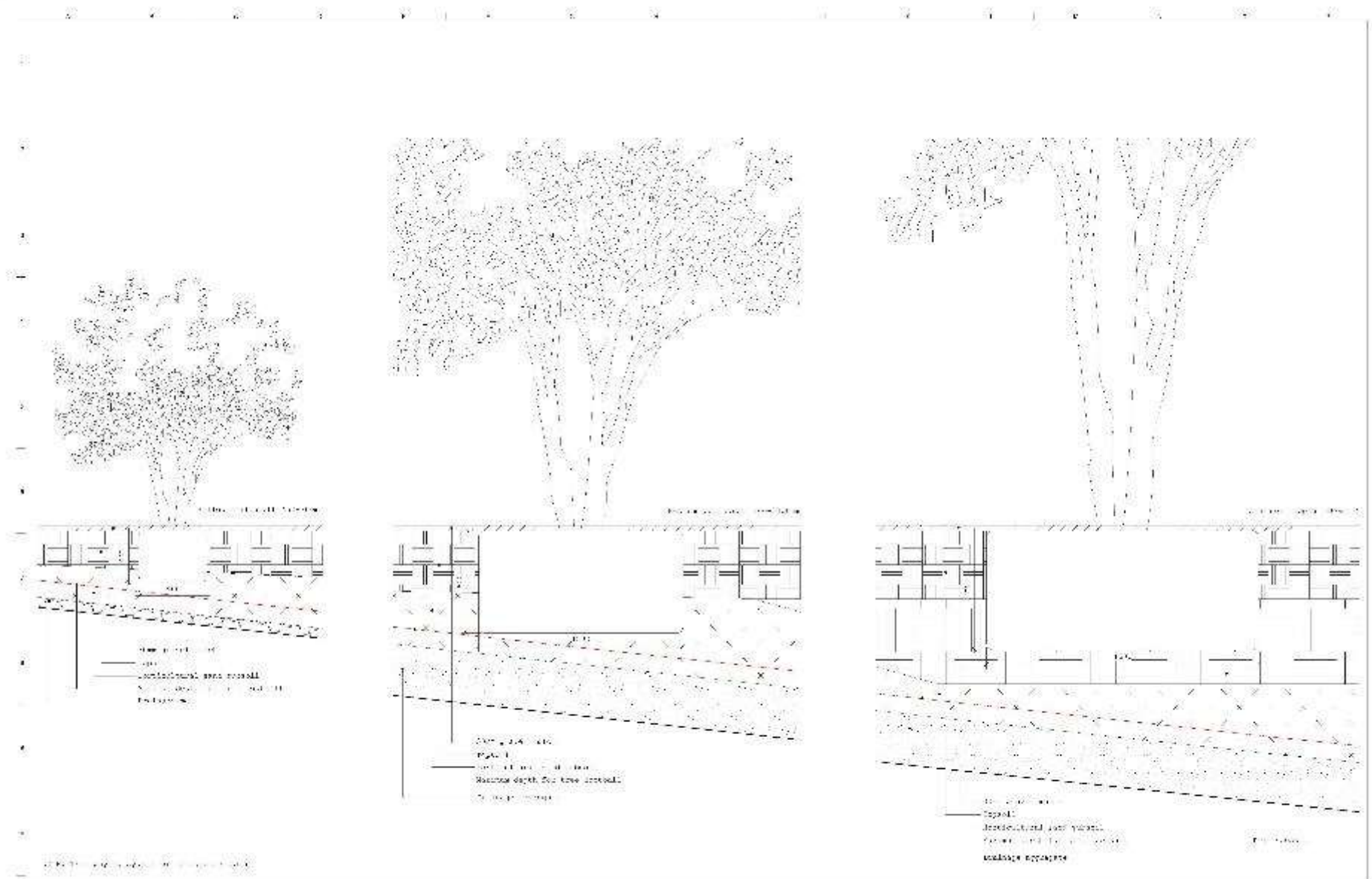


Figure 10: Cross-sections of bridge deck showing tree root profiles

Key

Tree Locations Achievable

Rootball positioned and depth appropriate

Tree Specifications Require Clarification

Tree parameters missing and require clarification

Depth Clashes

Tree/Shrub root ball does not have sufficient depth in current location

E.g. 1 No. *Rhus typhina* Dissecta (Rtd) 500mm / 290mm

DPS Rootball depth information Available soil depth

Services Clashes

Rootball positioned in service run

Hard Landscape Clashes

Rootball partially positioned in hard landscape

If more than one of the factors applies per tree, the plant locations are indicated in colour accordingly.

SOFT LANDSCAPE AREAS ONLY

For soil types refer to SHW 800 Series Specification

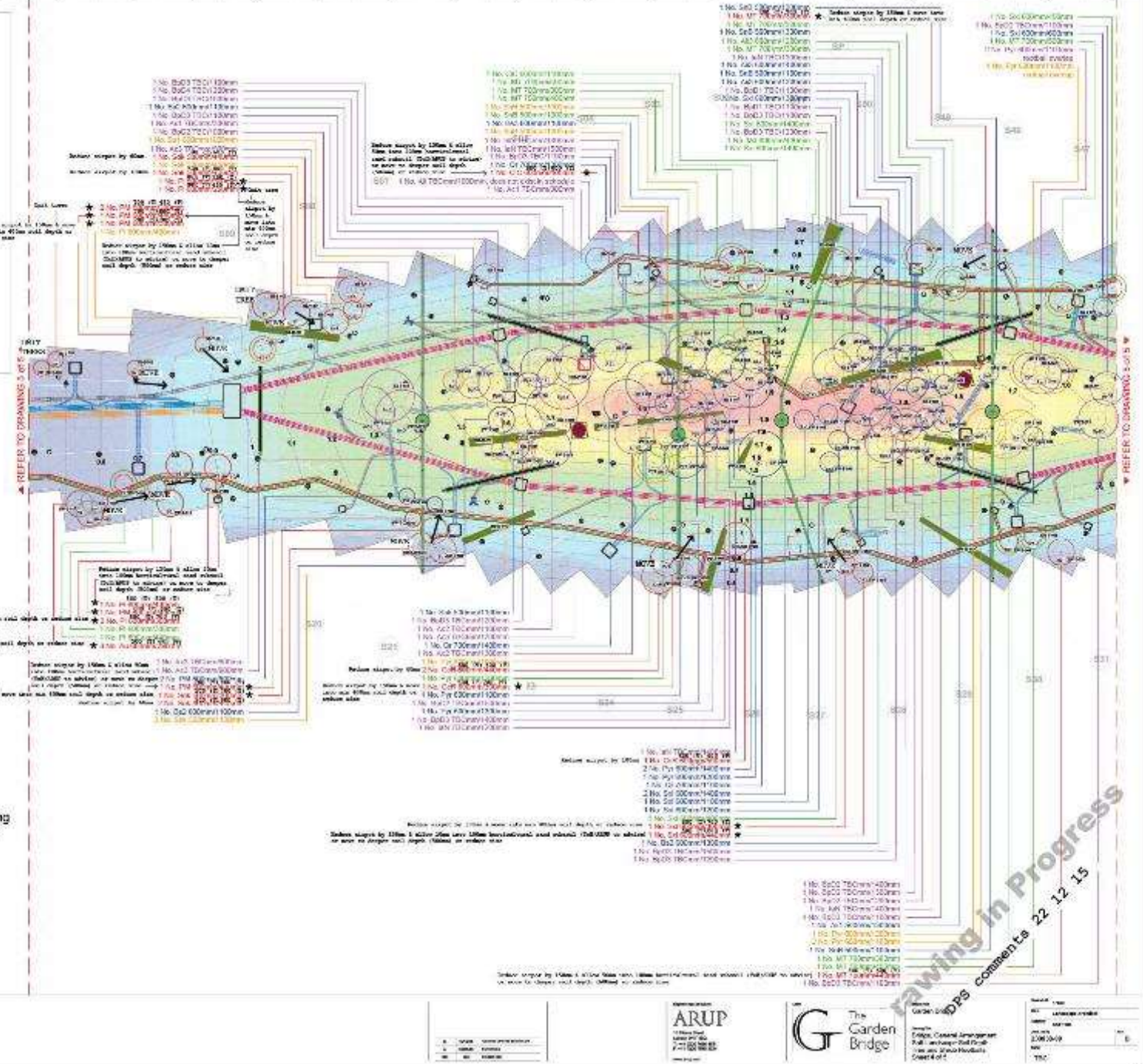
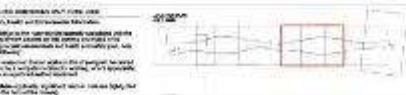
Soil depth (mm)	Soil strength (kN/m ²)	Soil type	Soil description	Soil depth (mm)	Soil strength (kN/m ²)	Soil type	Soil description
400	200	100	100	400	200	100	100
600	300	100	100	600	300	100	100
800	400	100	100	800	400	100	100
1000	500	100	100	1000	500	100	100
1200	600	100	100	1200	600	100	100
1400	700	100	100	1400	700	100	100
1600	800	100	100	1600	800	100	100
1800	900	100	100	1800	900	100	100
2000	1000	100	100	2000	1000	100	100

Soil depth (mm) Soil strength (kN/m²) Soil type Soil description

NOTE

- The soft landscape design shown is based on DPS draft information:
 - Tree and Shrub Planting Plans, Rev.C, 03/12/15
 - GBT-DP-B2-03-DR-LD-94101 to GBT-DP-B2-03-DR-LD-94103
 - GBR Planting Schedule, 03/12/15
 - GBR-PS-001-151203
 The current plan information shown is limited to tree plants only.
- Soil depth available for plant rootballs at day of planting (Drainage layer and additional 100mm of Horticultural Sand Subsoil) are not available for the overall rootball depth). See figures below:

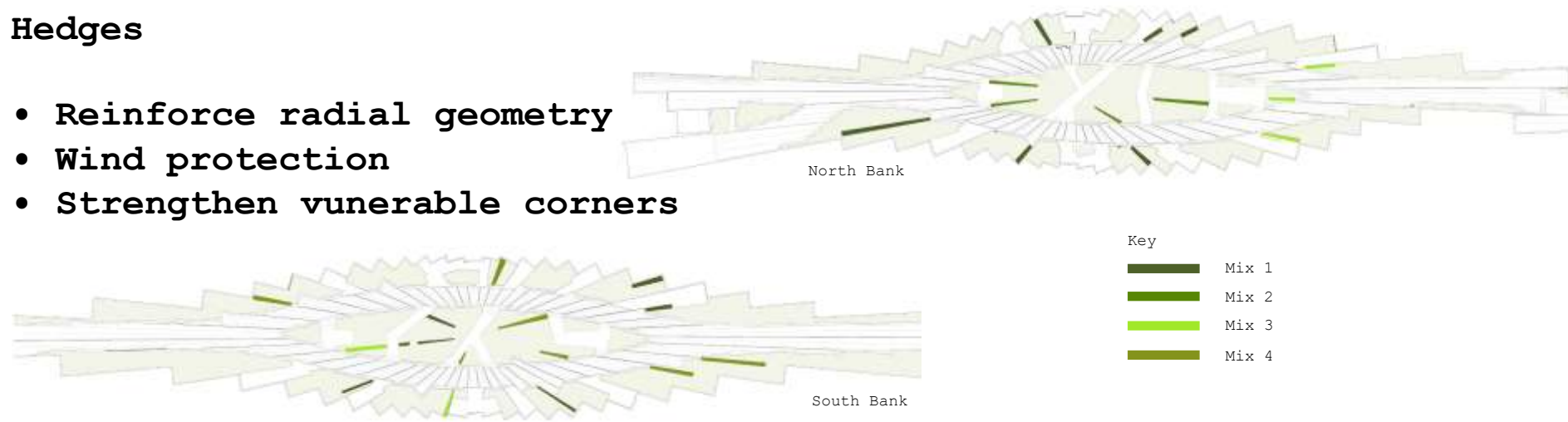
Soil depth (mm)	Soil strength (kN/m ²)	Soil type	Soil description
1500	1000	100	100
1400	900	100	100
1300	800	100	100
1200	700	100	100
1100	600	100	100



Drawing in Progress
DPS comments 22-12-15

Hedges

- Reinforce radial geometry
- Wind protection
- Strengthen vulnerable corners



MIX 1- *Buxus sempervirens* and *Taxus baccata* (50:50)



MIX 2- *Buxus sempervirens* and *Taxus baccata* (30:50)



MIX 3- *Buxus sempervirens*, *Carpinus betulus* (70:30)



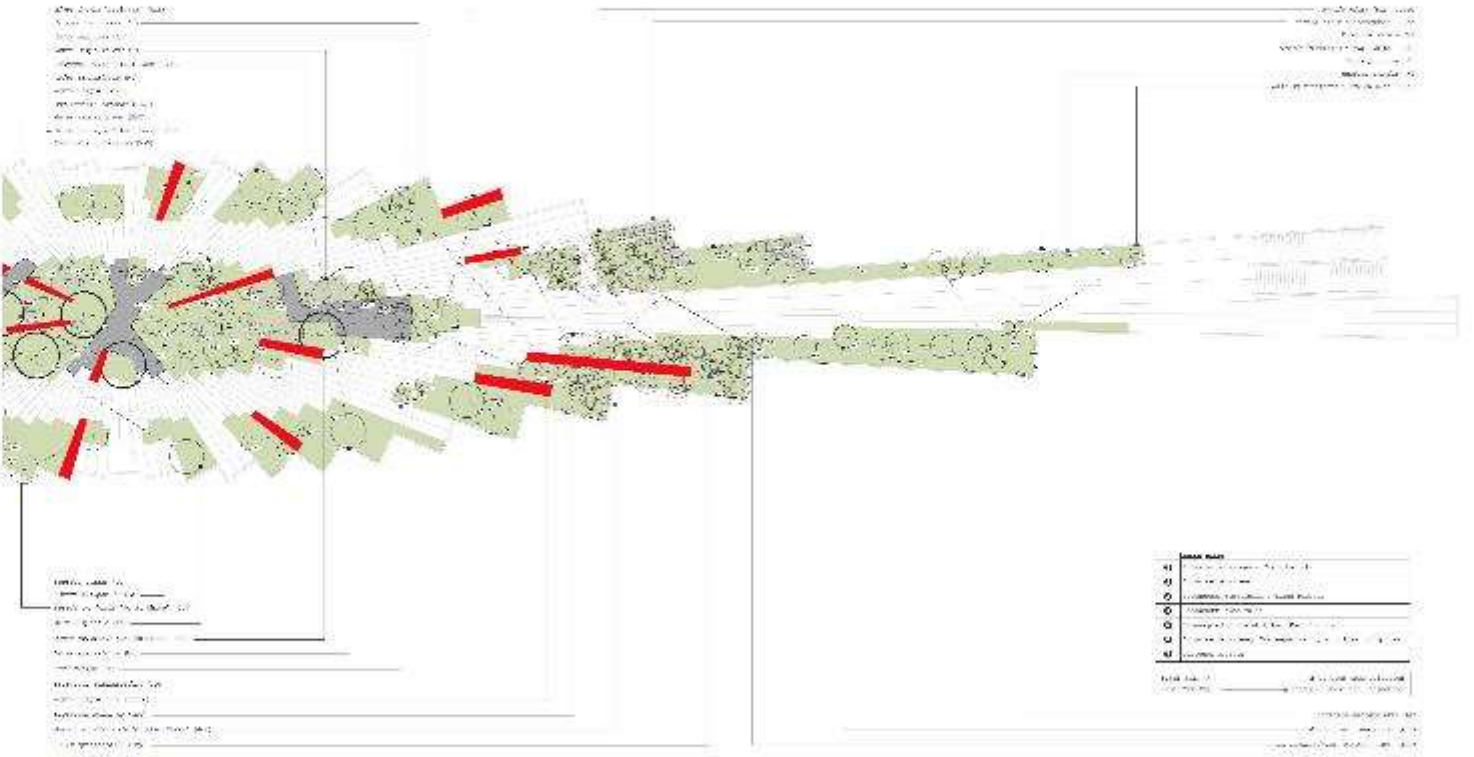
MIX 3- *Crataegus monogyna*, *Rosa rubiginosa*, *Buxus sempervirens*, (50:10:40)

Key:

- 1.00 - [Symbol] - [Text]
- 2.00 - [Symbol] - [Text]
- 3.00 - [Symbol] - [Text]
- 4.00 - [Symbol] - [Text]
- 5.00 - [Symbol] - [Text]
- 6.00 - [Symbol] - [Text]
- 7.00 - [Symbol] - [Text]
- 8.00 - [Symbol] - [Text]
- 9.00 - [Symbol] - [Text]
- 10.00 - [Symbol] - [Text]
- 11.00 - [Symbol] - [Text]
- 12.00 - [Symbol] - [Text]
- 13.00 - [Symbol] - [Text]
- 14.00 - [Symbol] - [Text]
- 15.00 - [Symbol] - [Text]
- 16.00 - [Symbol] - [Text]
- 17.00 - [Symbol] - [Text]
- 18.00 - [Symbol] - [Text]
- 19.00 - [Symbol] - [Text]
- 20.00 - [Symbol] - [Text]
- 21.00 - [Symbol] - [Text]
- 22.00 - [Symbol] - [Text]
- 23.00 - [Symbol] - [Text]
- 24.00 - [Symbol] - [Text]
- 25.00 - [Symbol] - [Text]
- 26.00 - [Symbol] - [Text]
- 27.00 - [Symbol] - [Text]
- 28.00 - [Symbol] - [Text]
- 29.00 - [Symbol] - [Text]
- 30.00 - [Symbol] - [Text]
- 31.00 - [Symbol] - [Text]
- 32.00 - [Symbol] - [Text]
- 33.00 - [Symbol] - [Text]
- 34.00 - [Symbol] - [Text]
- 35.00 - [Symbol] - [Text]
- 36.00 - [Symbol] - [Text]
- 37.00 - [Symbol] - [Text]
- 38.00 - [Symbol] - [Text]
- 39.00 - [Symbol] - [Text]
- 40.00 - [Symbol] - [Text]
- 41.00 - [Symbol] - [Text]
- 42.00 - [Symbol] - [Text]
- 43.00 - [Symbol] - [Text]
- 44.00 - [Symbol] - [Text]
- 45.00 - [Symbol] - [Text]
- 46.00 - [Symbol] - [Text]
- 47.00 - [Symbol] - [Text]
- 48.00 - [Symbol] - [Text]
- 49.00 - [Symbol] - [Text]
- 50.00 - [Symbol] - [Text]
- 51.00 - [Symbol] - [Text]
- 52.00 - [Symbol] - [Text]
- 53.00 - [Symbol] - [Text]
- 54.00 - [Symbol] - [Text]
- 55.00 - [Symbol] - [Text]
- 56.00 - [Symbol] - [Text]
- 57.00 - [Symbol] - [Text]
- 58.00 - [Symbol] - [Text]
- 59.00 - [Symbol] - [Text]
- 60.00 - [Symbol] - [Text]
- 61.00 - [Symbol] - [Text]
- 62.00 - [Symbol] - [Text]
- 63.00 - [Symbol] - [Text]
- 64.00 - [Symbol] - [Text]
- 65.00 - [Symbol] - [Text]
- 66.00 - [Symbol] - [Text]
- 67.00 - [Symbol] - [Text]
- 68.00 - [Symbol] - [Text]
- 69.00 - [Symbol] - [Text]
- 70.00 - [Symbol] - [Text]
- 71.00 - [Symbol] - [Text]
- 72.00 - [Symbol] - [Text]
- 73.00 - [Symbol] - [Text]
- 74.00 - [Symbol] - [Text]
- 75.00 - [Symbol] - [Text]
- 76.00 - [Symbol] - [Text]
- 77.00 - [Symbol] - [Text]
- 78.00 - [Symbol] - [Text]
- 79.00 - [Symbol] - [Text]
- 80.00 - [Symbol] - [Text]
- 81.00 - [Symbol] - [Text]
- 82.00 - [Symbol] - [Text]
- 83.00 - [Symbol] - [Text]
- 84.00 - [Symbol] - [Text]
- 85.00 - [Symbol] - [Text]
- 86.00 - [Symbol] - [Text]
- 87.00 - [Symbol] - [Text]
- 88.00 - [Symbol] - [Text]
- 89.00 - [Symbol] - [Text]
- 90.00 - [Symbol] - [Text]
- 91.00 - [Symbol] - [Text]
- 92.00 - [Symbol] - [Text]
- 93.00 - [Symbol] - [Text]
- 94.00 - [Symbol] - [Text]
- 95.00 - [Symbol] - [Text]
- 96.00 - [Symbol] - [Text]
- 97.00 - [Symbol] - [Text]
- 98.00 - [Symbol] - [Text]
- 99.00 - [Symbol] - [Text]
- 100.00 - [Symbol] - [Text]

Planting Schedule:

Code	Plant Name	Quantity	Notes
1.00
2.00
3.00
4.00
5.00
6.00
7.00
8.00
9.00
10.00
11.00
12.00
13.00
14.00
15.00
16.00
17.00
18.00
19.00
20.00
21.00
22.00
23.00
24.00
25.00
26.00
27.00
28.00
29.00
30.00
31.00
32.00
33.00
34.00
35.00
36.00
37.00
38.00
39.00
40.00
41.00
42.00
43.00
44.00
45.00
46.00
47.00
48.00
49.00
50.00
51.00
52.00
53.00
54.00
55.00
56.00
57.00
58.00
59.00
60.00
61.00
62.00
63.00
64.00
65.00
66.00
67.00
68.00
69.00
70.00
71.00
72.00
73.00
74.00
75.00
76.00
77.00
78.00
79.00
80.00
81.00
82.00
83.00
84.00
85.00
86.00
87.00
88.00
89.00
90.00
91.00
92.00
93.00
94.00
95.00
96.00
97.00
98.00
99.00
100.00



Scale:

1:100	1:200	1:500	1:1000	1:2000	1:5000	1:10000
-------	-------	-------	--------	--------	--------	---------

1	2	3	4	5	6	7	8	9	10
1	2	3	4	5	6	7	8	9	10

Dim Pokok Studio
 20, Jalan...
 11000...

Horizon studio
 11, Jalan...
 11000...

ARUP
 11, Jalan...
 11000...

Green Cityscape
 11, Jalan...
 11000...

Green Cityscape
 11, Jalan...
 11000...

Proposed Landscape Planting Layer 2 of 3
 Planning
 DP L P 000





Betula nigra



Quercus illex



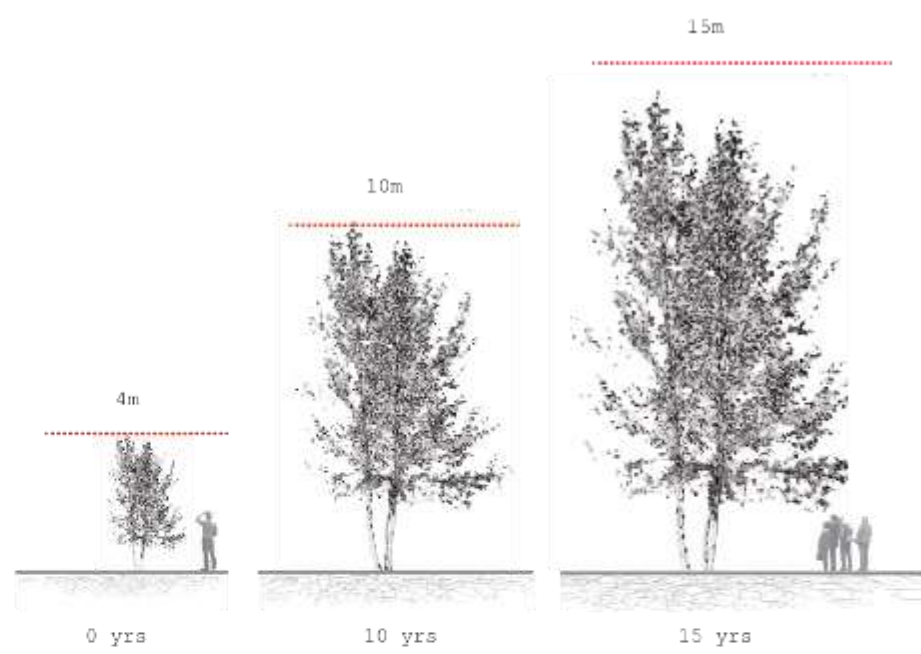
Azelanther laurckii



Betula exoniifolia



Sorbus x intermedia



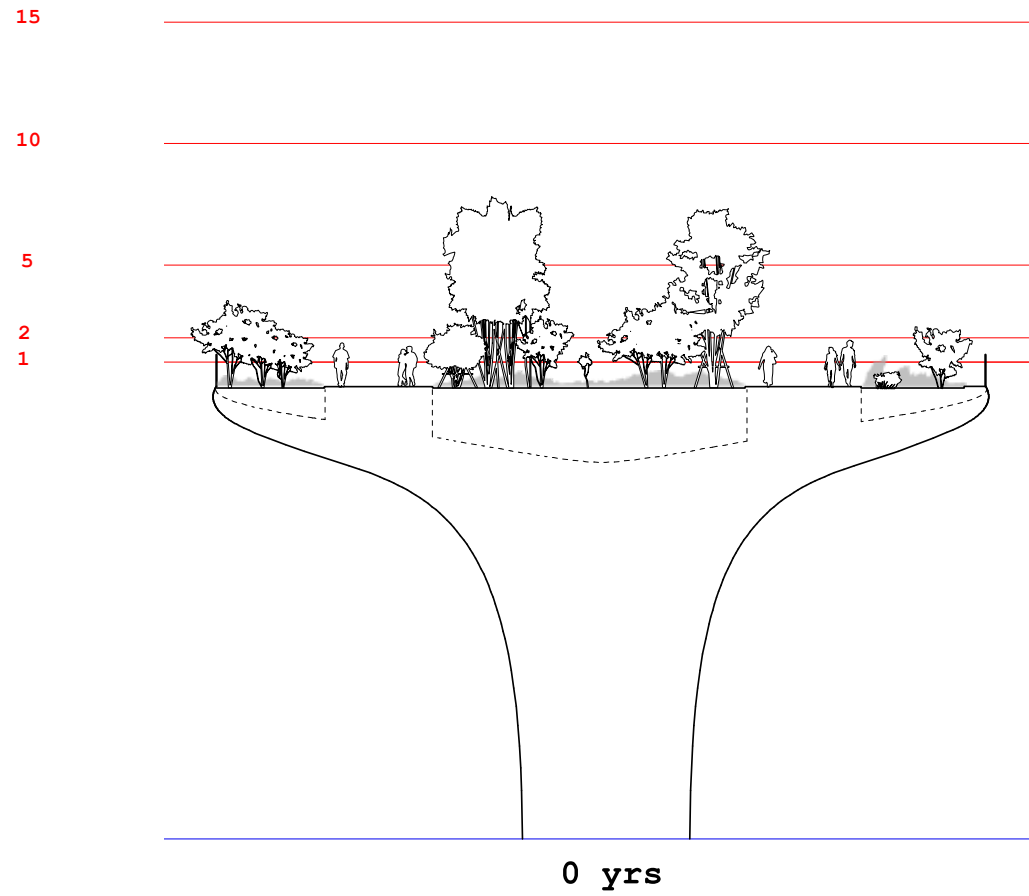
Cornus mas

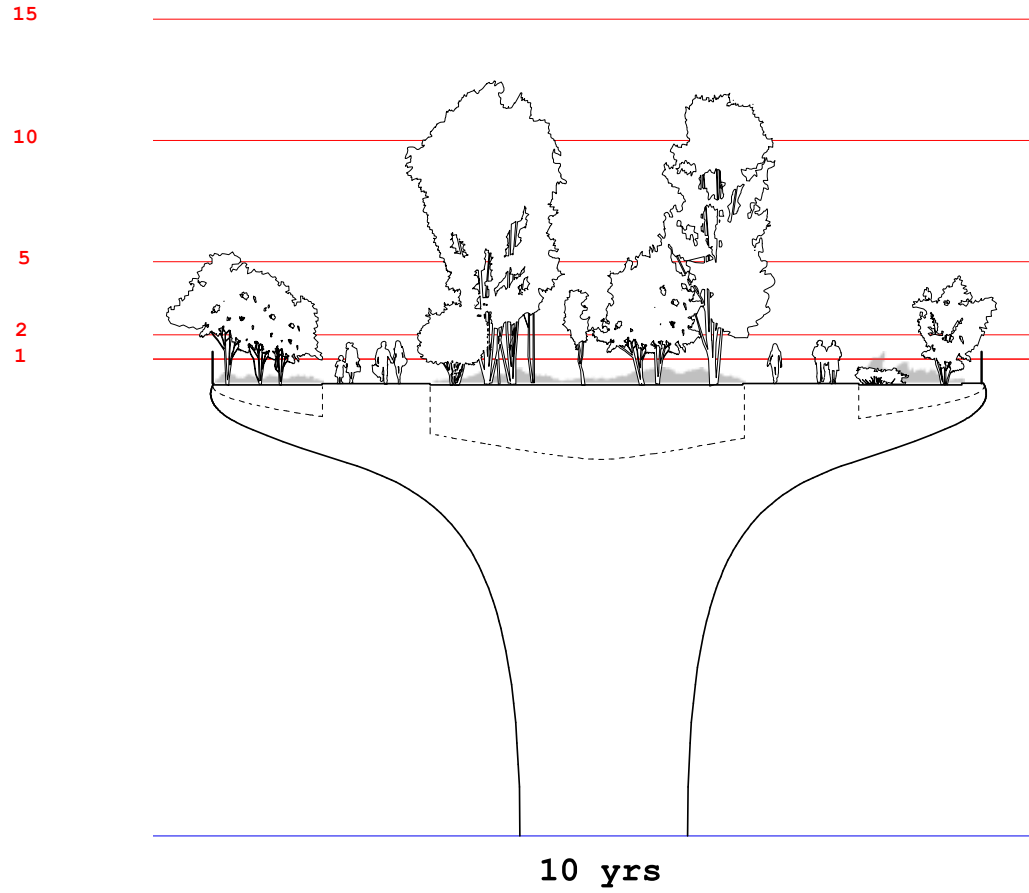


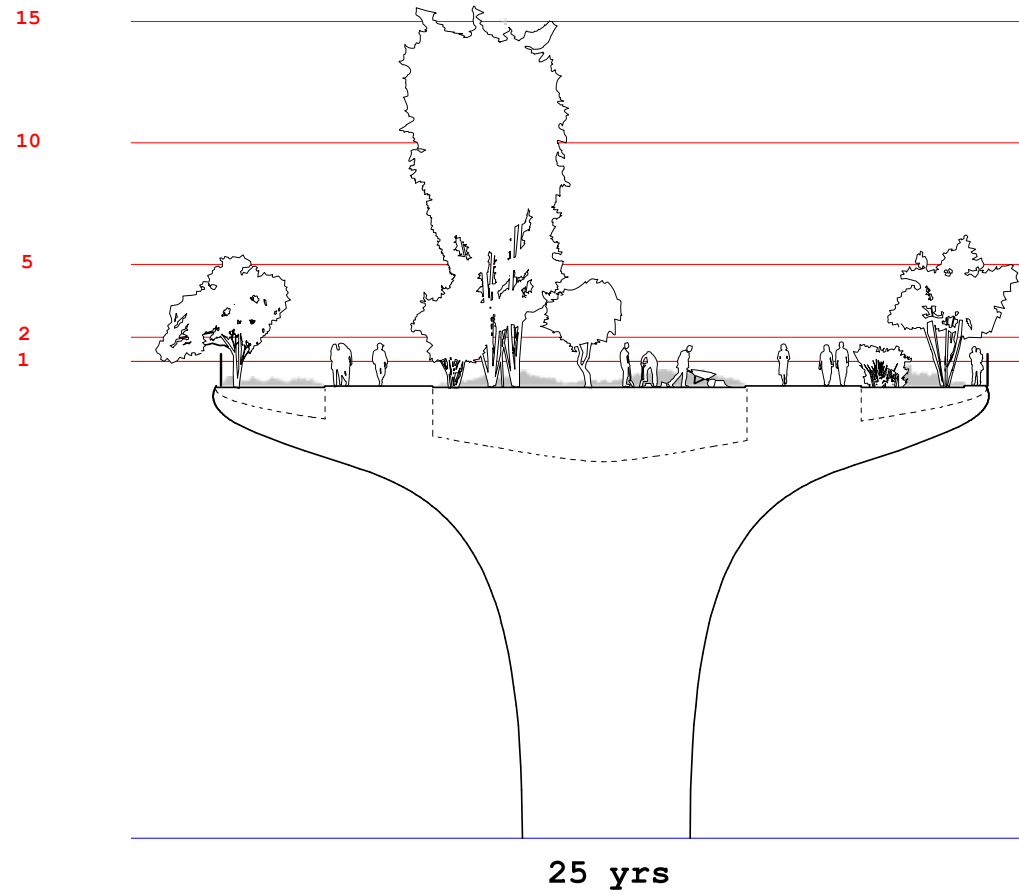
Prunus domestica

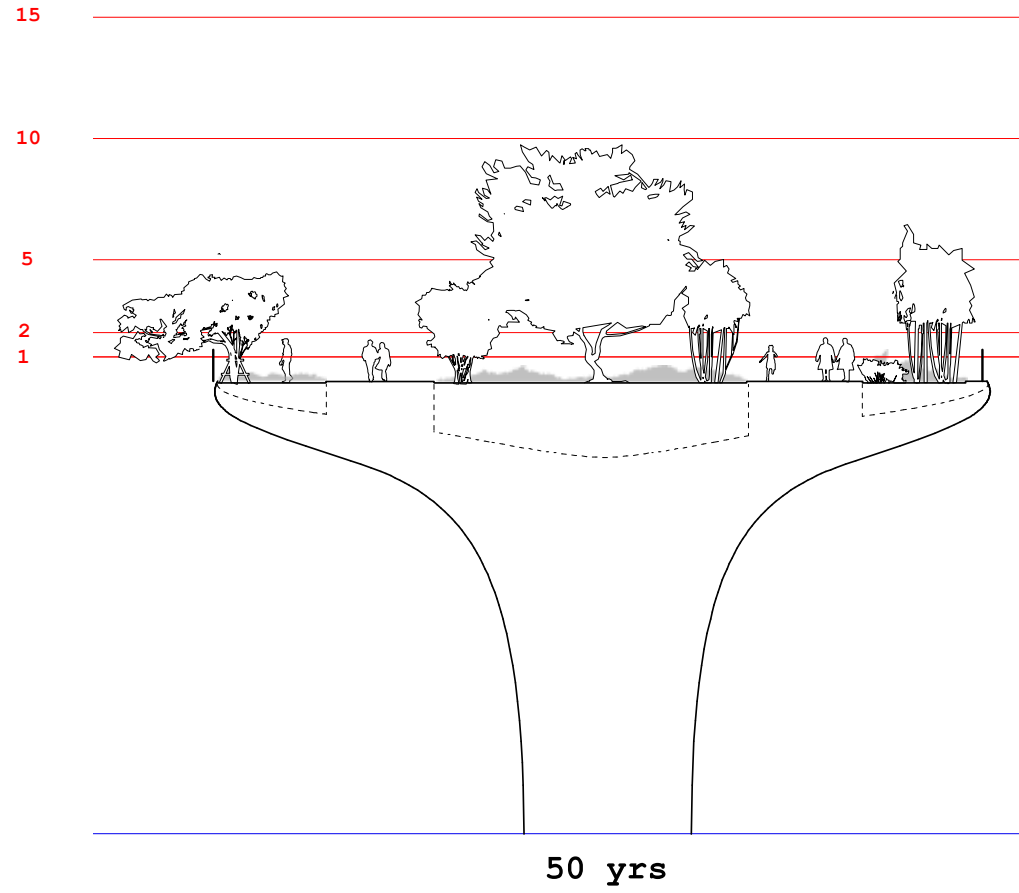


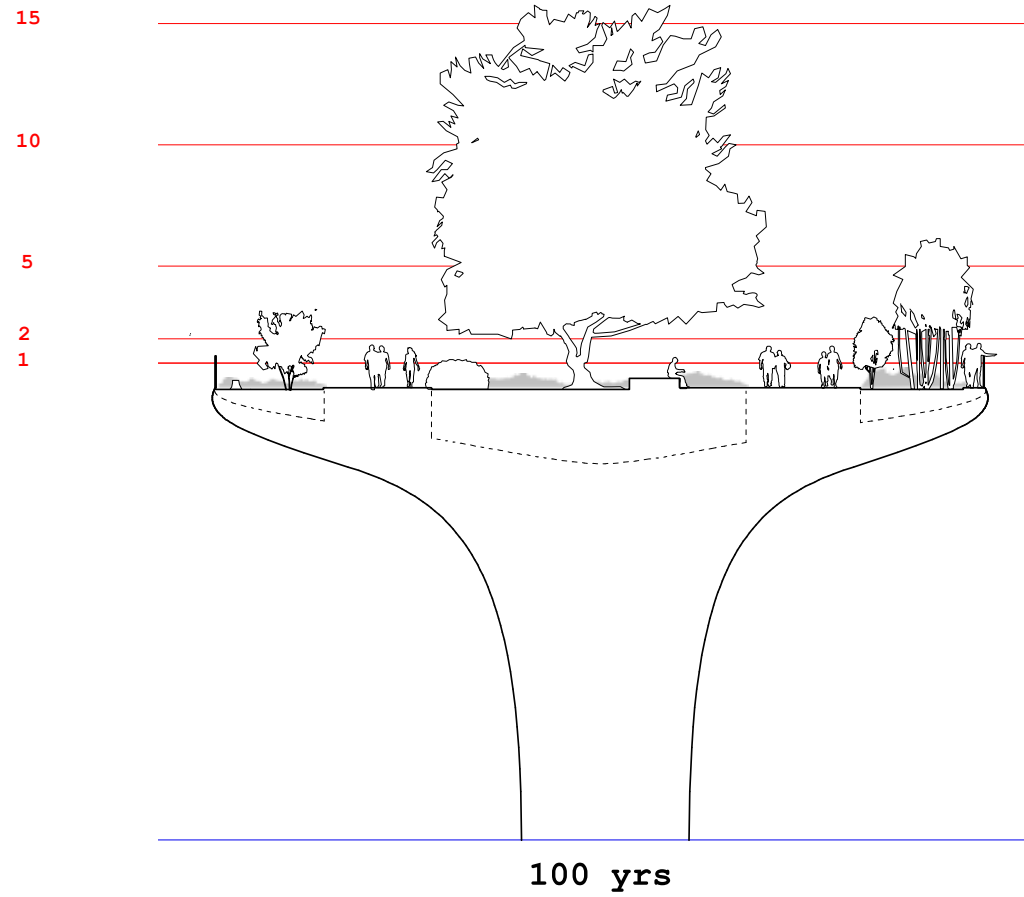


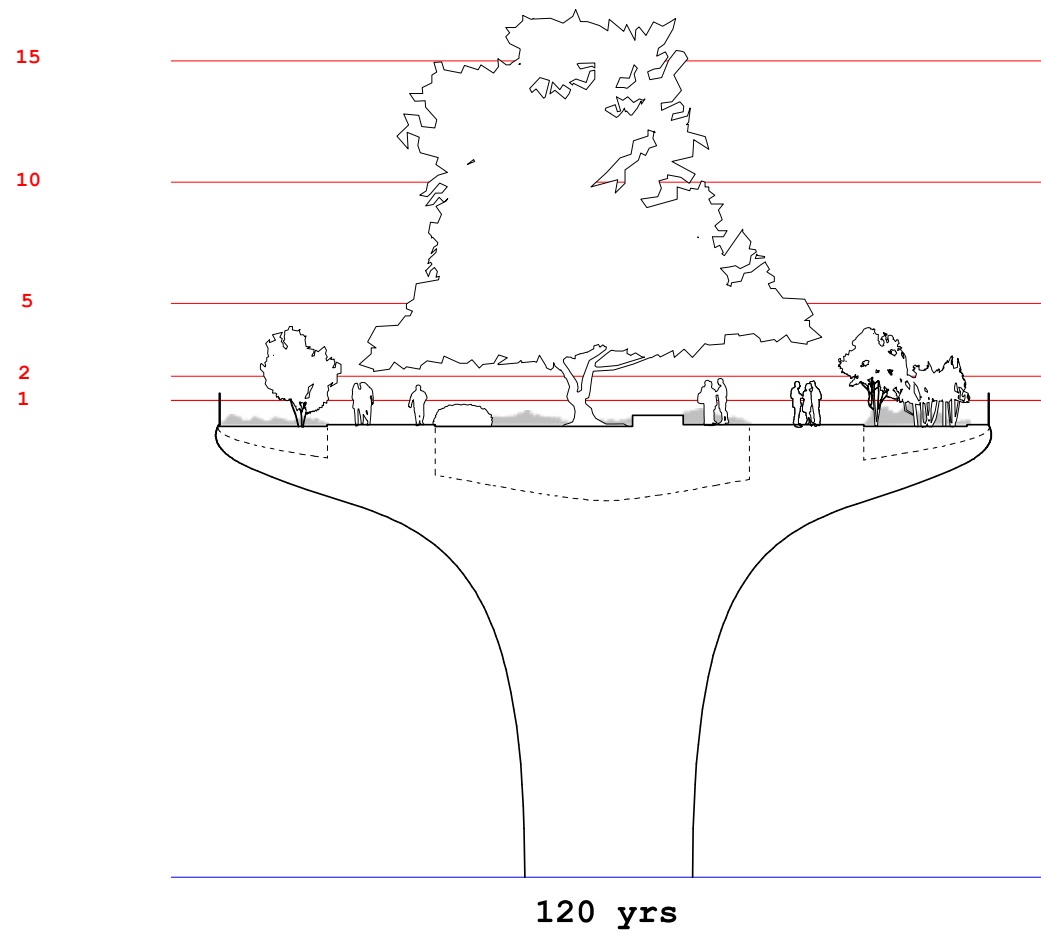






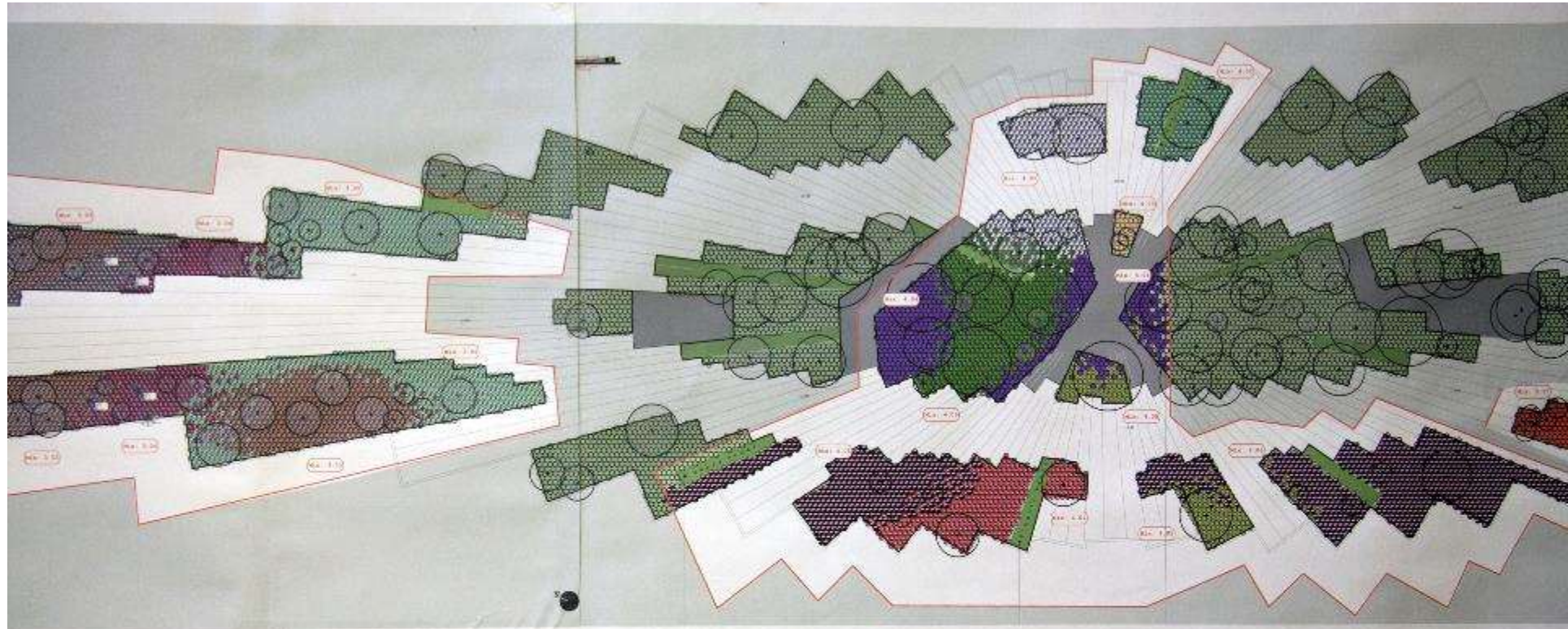






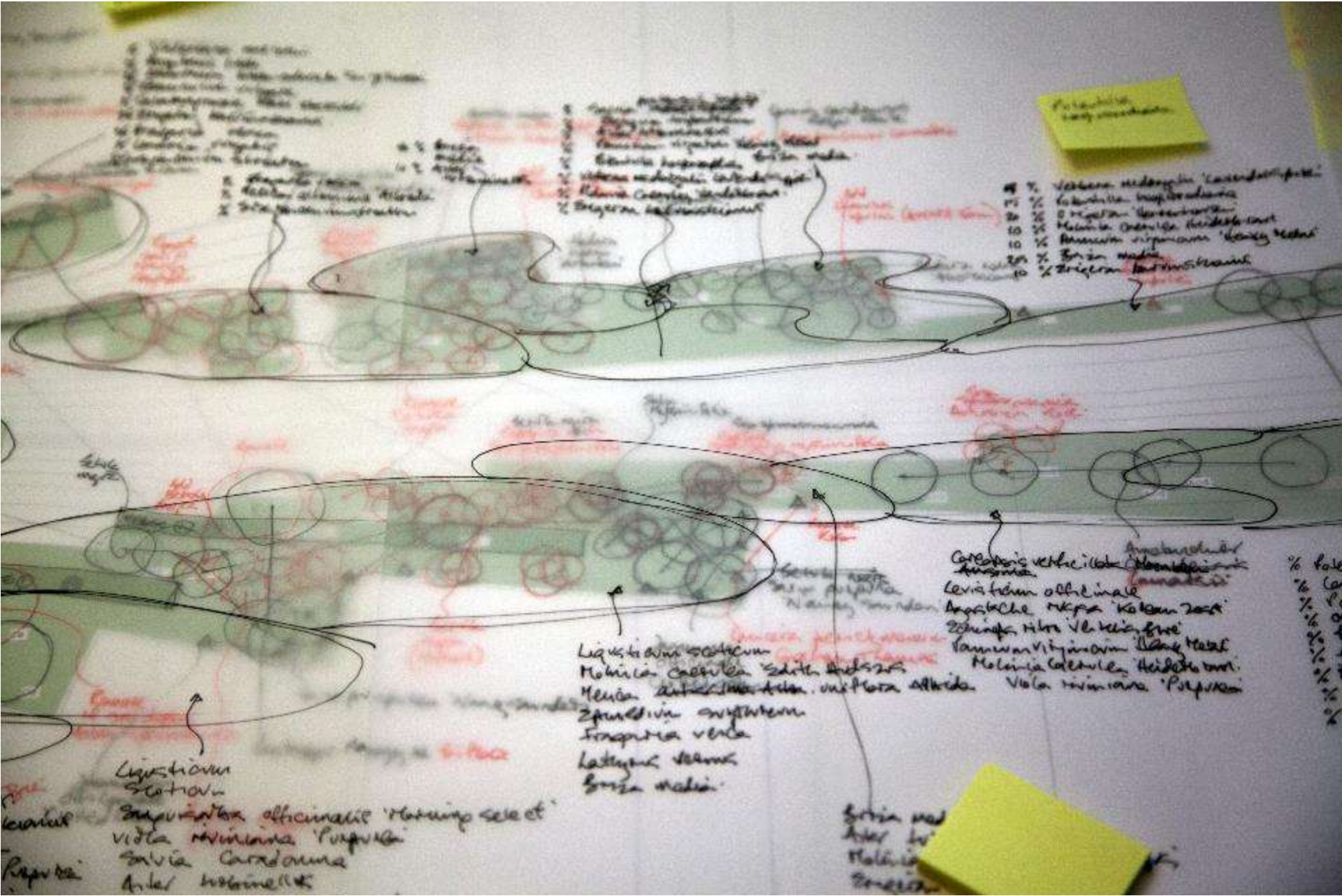






Order planting: perennial, w/less
 1/1/11

NO. 3.28	NO. 3.29	NO. 3.30	NO. 3.31	NO. 3.32	NO. 3.33	NO. 3.34	NO. 3.35	NO. 3.36
<p>NO. 3.28</p> <ul style="list-style-type: none"> 1. ... 2. ... 3. ... 4. ... 5. ... 6. ... 7. ... 8. ... 9. ... 10. ... 	<p>NO. 3.29</p> <ul style="list-style-type: none"> 1. ... 2. ... 3. ... 4. ... 5. ... 6. ... 7. ... 8. ... 9. ... 10. ... 	<p>NO. 3.30</p> <ul style="list-style-type: none"> 1. ... 2. ... 3. ... 4. ... 5. ... 6. ... 7. ... 8. ... 9. ... 10. ... 	<p>NO. 3.31</p> <ul style="list-style-type: none"> 1. ... 2. ... 3. ... 4. ... 5. ... 6. ... 7. ... 8. ... 9. ... 10. ... 	<p>NO. 3.32</p> <ul style="list-style-type: none"> 1. ... 2. ... 3. ... 4. ... 5. ... 6. ... 7. ... 8. ... 9. ... 10. ... 	<p>NO. 3.33</p> <ul style="list-style-type: none"> 1. ... 2. ... 3. ... 4. ... 5. ... 6. ... 7. ... 8. ... 9. ... 10. ... 	<p>NO. 3.34</p> <ul style="list-style-type: none"> 1. ... 2. ... 3. ... 4. ... 5. ... 6. ... 7. ... 8. ... 9. ... 10. ... 	<p>NO. 3.35</p> <ul style="list-style-type: none"> 1. ... 2. ... 3. ... 4. ... 5. ... 6. ... 7. ... 8. ... 9. ... 10. ... 	<p>NO. 3.36</p> <ul style="list-style-type: none"> 1. ... 2. ... 3. ... 4. ... 5. ... 6. ... 7. ... 8. ... 9. ... 10. ...



- 1. *Urtica dioica*
- 2. *Urtica dioica*
- 3. *Urtica dioica*
- 4. *Urtica dioica*
- 5. *Urtica dioica*
- 6. *Urtica dioica*
- 7. *Urtica dioica*
- 8. *Urtica dioica*
- 9. *Urtica dioica*
- 10. *Urtica dioica*

- 1. *Urtica dioica*
- 2. *Urtica dioica*
- 3. *Urtica dioica*
- 4. *Urtica dioica*
- 5. *Urtica dioica*
- 6. *Urtica dioica*
- 7. *Urtica dioica*
- 8. *Urtica dioica*
- 9. *Urtica dioica*
- 10. *Urtica dioica*

- 10% *Urtica dioica*
- 15% *Urtica dioica*
- 20% *Urtica dioica*
- 10% *Urtica dioica*
- 10% *Urtica dioica*
- 10% *Urtica dioica*
- 10% *Urtica dioica*

- Ligusticum scoticum*
- Samolus officinalis* 'rotundifolius'
- Viola riviniana* 'Purpurea'
- Salvia caradonna*
- Artemisia*

- Ligusticum scoticum*
- Mohica calcicola* 'Edith Andersson'
- Melica*
- Sparganium angustatum*
- Fragaria vesca*
- Lactuca scariola*
- Bryonia cretica*

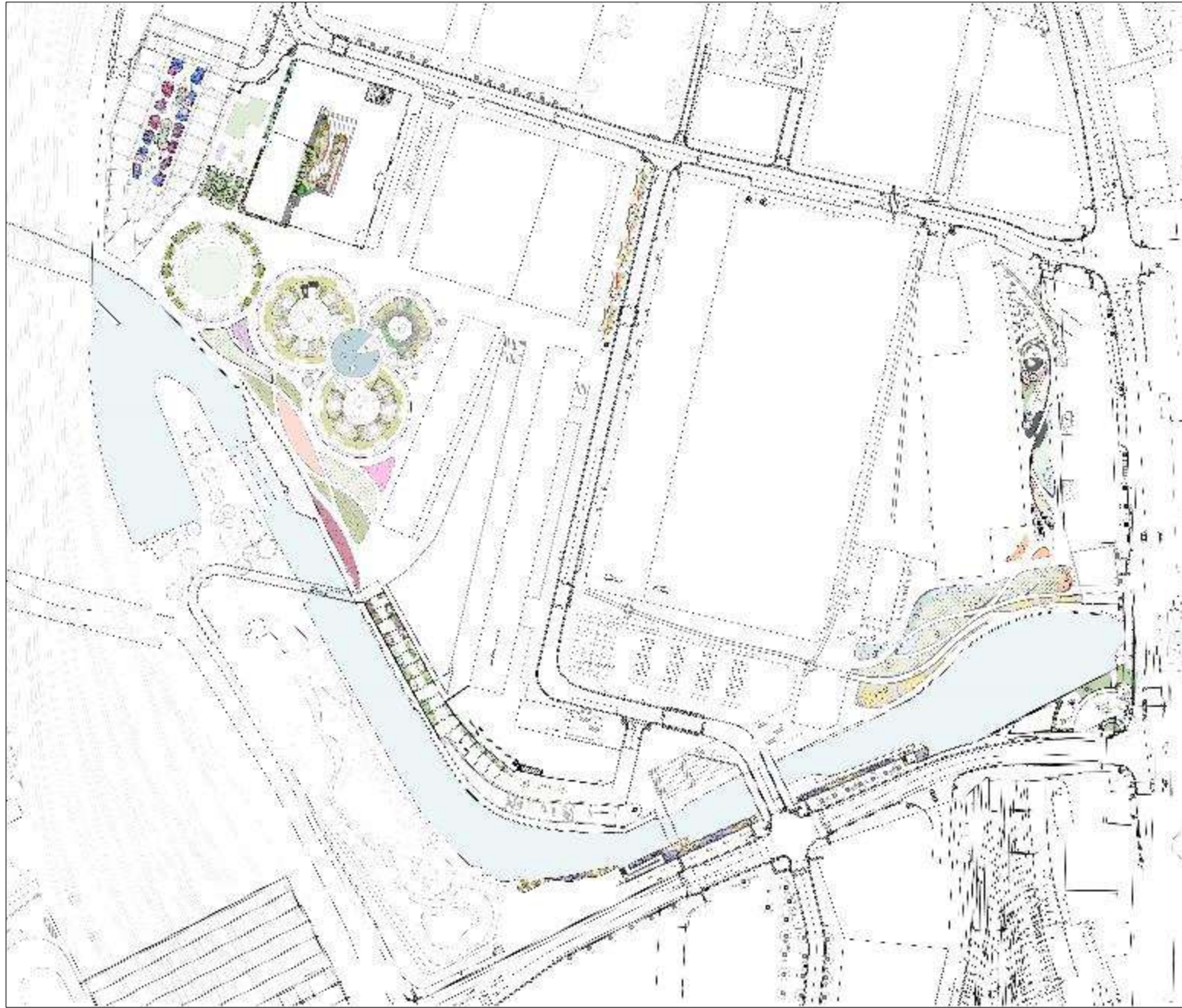
- Cotyledon verticillata*
- Levis form officinale*
- Anastache*
- Zingiber*
- Ranunculus*
- Melissa*
- Viola riviniana*

% total
% Ca
% P
% K
% Mg
% S
% N
% C

Bryonia
Artemisia
Melissa
Sparganium

King's Cross Development







Handyside Gardens













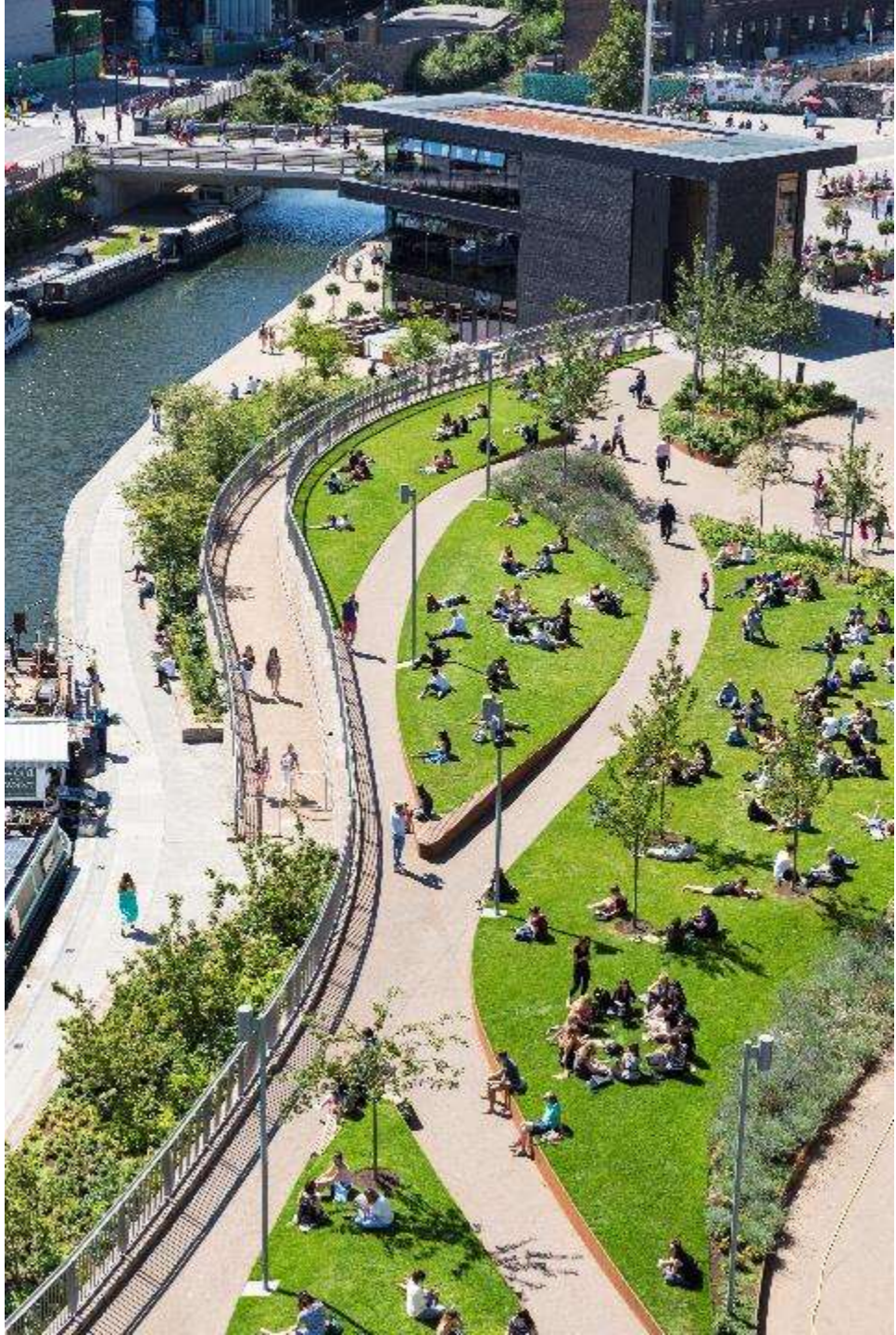






Wharf Road







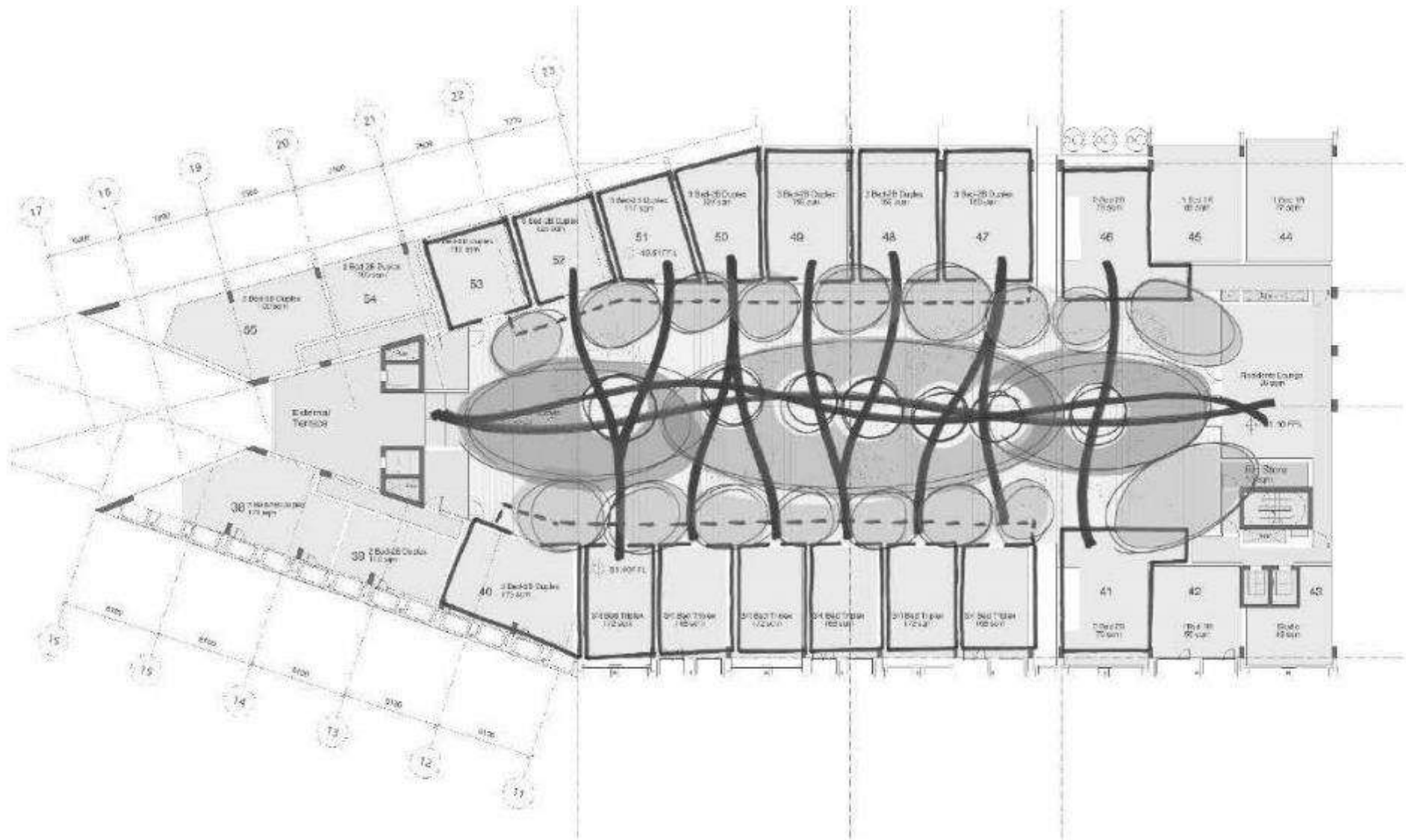


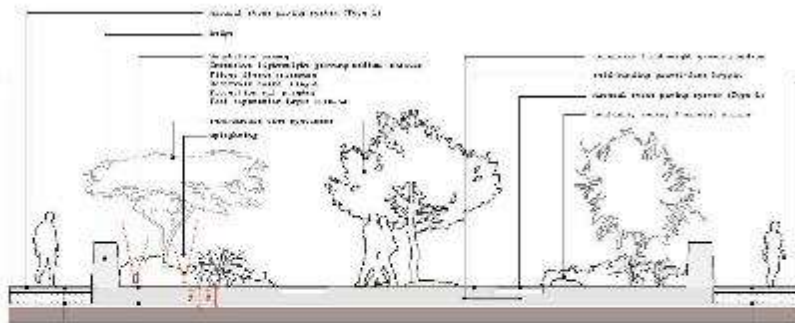




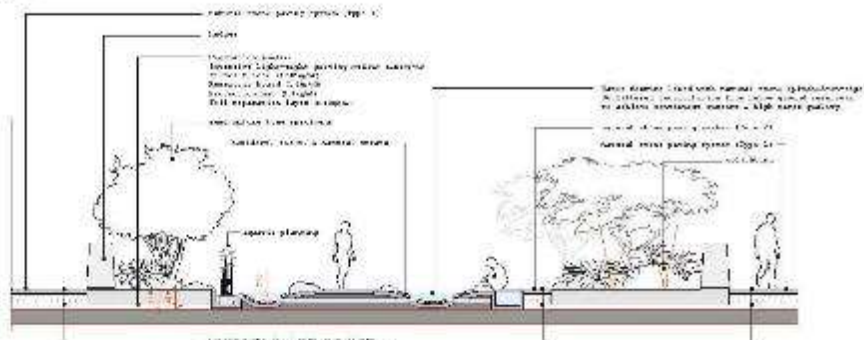
The Tapestry Building



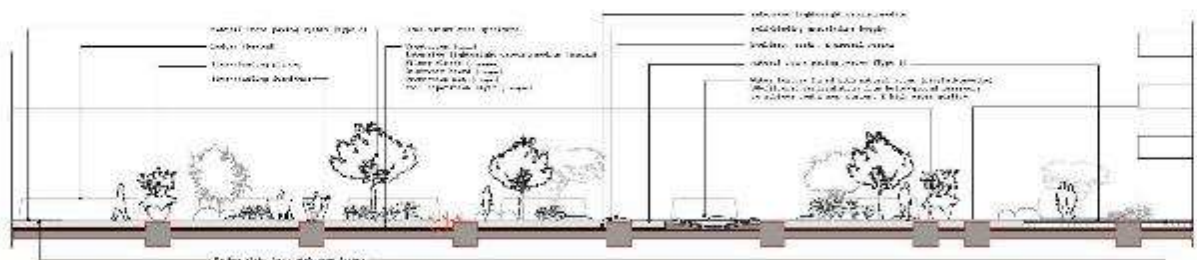




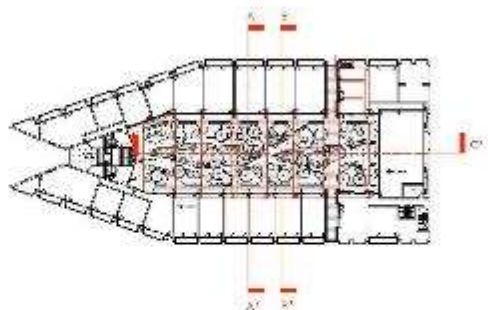
4) Schnitt West (1:50)
A/B



5) Schnitt Südost (1:50)
A/B



7) Schnitt Südost (1:50)
A/B



1	DRG	Druck	1:50
2	DRG	Druck	1:50
3	DRG	Druck	1:50
4	DRG	Druck	1:50
5	DRG	Druck	1:50
6	DRG	Druck	1:50
7	DRG	Druck	1:50
8	DRG	Druck	1:50
9	DRG	Druck	1:50
10	DRG	Druck	1:50
11	DRG	Druck	1:50
12	DRG	Druck	1:50
13	DRG	Druck	1:50
14	DRG	Druck	1:50
15	DRG	Druck	1:50
16	DRG	Druck	1:50
17	DRG	Druck	1:50
18	DRG	Druck	1:50
19	DRG	Druck	1:50
20	DRG	Druck	1:50
21	DRG	Druck	1:50
22	DRG	Druck	1:50
23	DRG	Druck	1:50
24	DRG	Druck	1:50
25	DRG	Druck	1:50
26	DRG	Druck	1:50
27	DRG	Druck	1:50
28	DRG	Druck	1:50
29	DRG	Druck	1:50
30	DRG	Druck	1:50
31	DRG	Druck	1:50
32	DRG	Druck	1:50
33	DRG	Druck	1:50
34	DRG	Druck	1:50
35	DRG	Druck	1:50
36	DRG	Druck	1:50
37	DRG	Druck	1:50
38	DRG	Druck	1:50
39	DRG	Druck	1:50
40	DRG	Druck	1:50
41	DRG	Druck	1:50
42	DRG	Druck	1:50
43	DRG	Druck	1:50
44	DRG	Druck	1:50
45	DRG	Druck	1:50
46	DRG	Druck	1:50
47	DRG	Druck	1:50
48	DRG	Druck	1:50
49	DRG	Druck	1:50
50	DRG	Druck	1:50
51	DRG	Druck	1:50
52	DRG	Druck	1:50
53	DRG	Druck	1:50
54	DRG	Druck	1:50
55	DRG	Druck	1:50
56	DRG	Druck	1:50
57	DRG	Druck	1:50
58	DRG	Druck	1:50
59	DRG	Druck	1:50
60	DRG	Druck	1:50
61	DRG	Druck	1:50
62	DRG	Druck	1:50
63	DRG	Druck	1:50
64	DRG	Druck	1:50
65	DRG	Druck	1:50
66	DRG	Druck	1:50
67	DRG	Druck	1:50
68	DRG	Druck	1:50
69	DRG	Druck	1:50
70	DRG	Druck	1:50
71	DRG	Druck	1:50
72	DRG	Druck	1:50
73	DRG	Druck	1:50
74	DRG	Druck	1:50
75	DRG	Druck	1:50
76	DRG	Druck	1:50
77	DRG	Druck	1:50
78	DRG	Druck	1:50
79	DRG	Druck	1:50
80	DRG	Druck	1:50
81	DRG	Druck	1:50
82	DRG	Druck	1:50
83	DRG	Druck	1:50
84	DRG	Druck	1:50
85	DRG	Druck	1:50
86	DRG	Druck	1:50
87	DRG	Druck	1:50
88	DRG	Druck	1:50
89	DRG	Druck	1:50
90	DRG	Druck	1:50
91	DRG	Druck	1:50
92	DRG	Druck	1:50
93	DRG	Druck	1:50
94	DRG	Druck	1:50
95	DRG	Druck	1:50
96	DRG	Druck	1:50
97	DRG	Druck	1:50
98	DRG	Druck	1:50
99	DRG	Druck	1:50
100	DRG	Druck	1:50



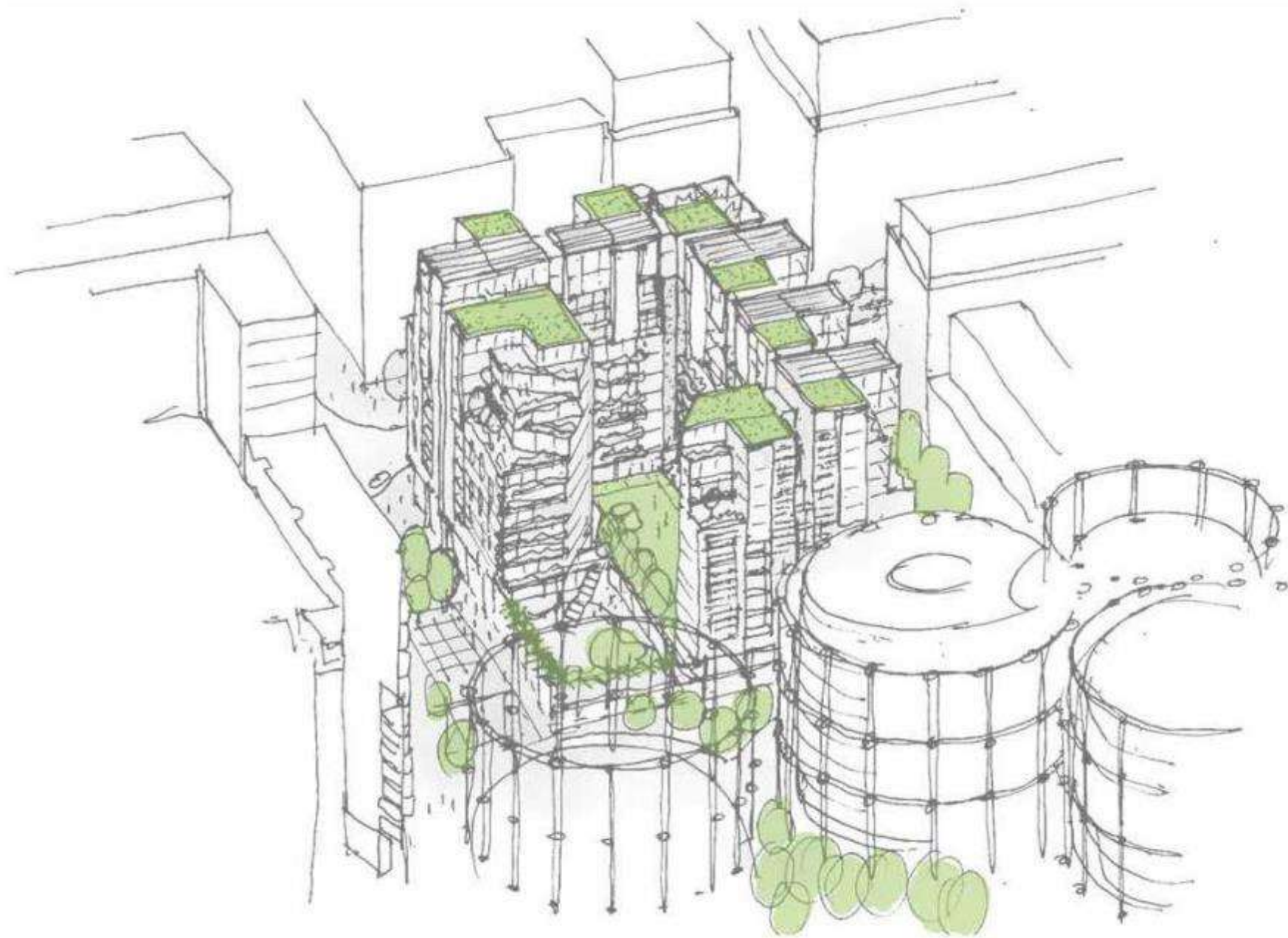


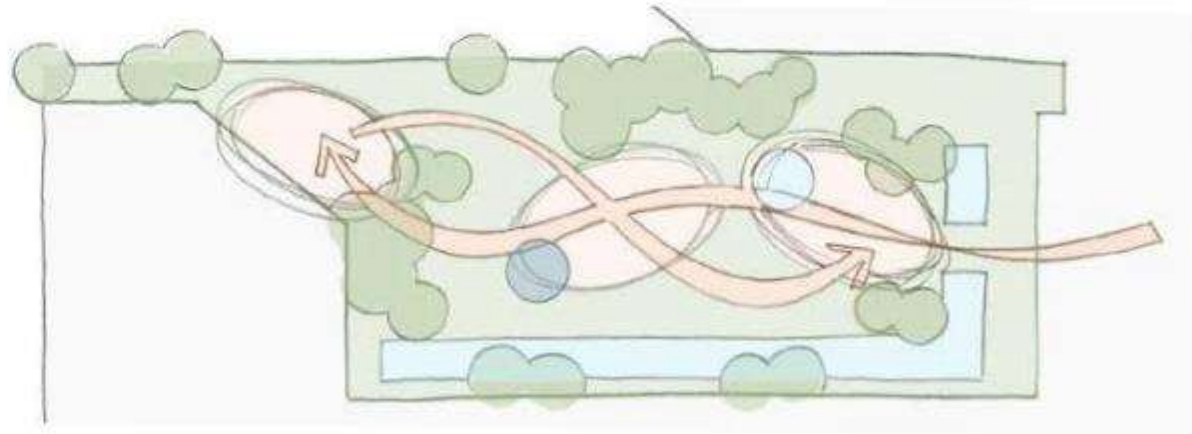
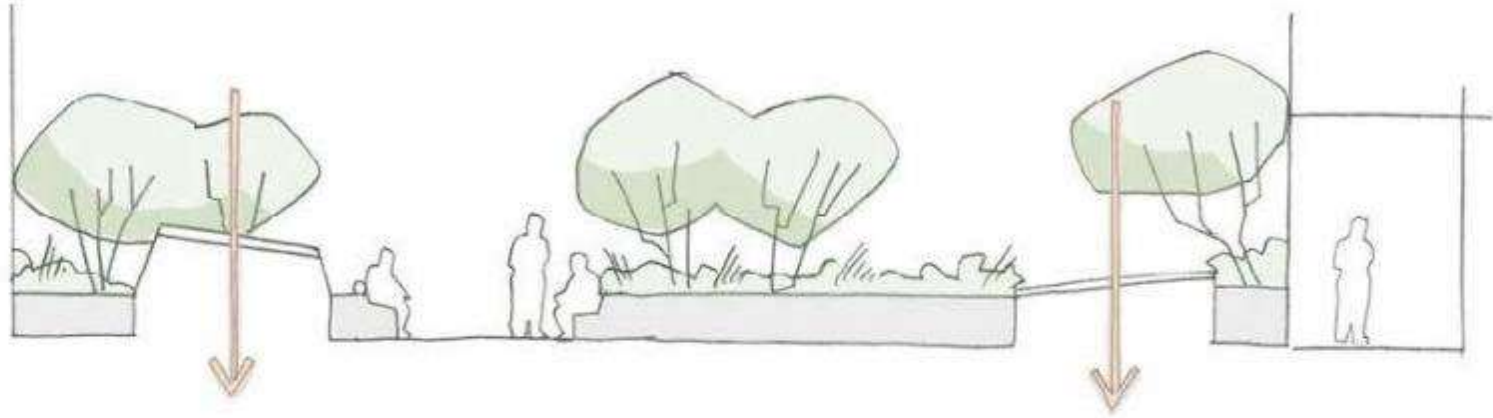






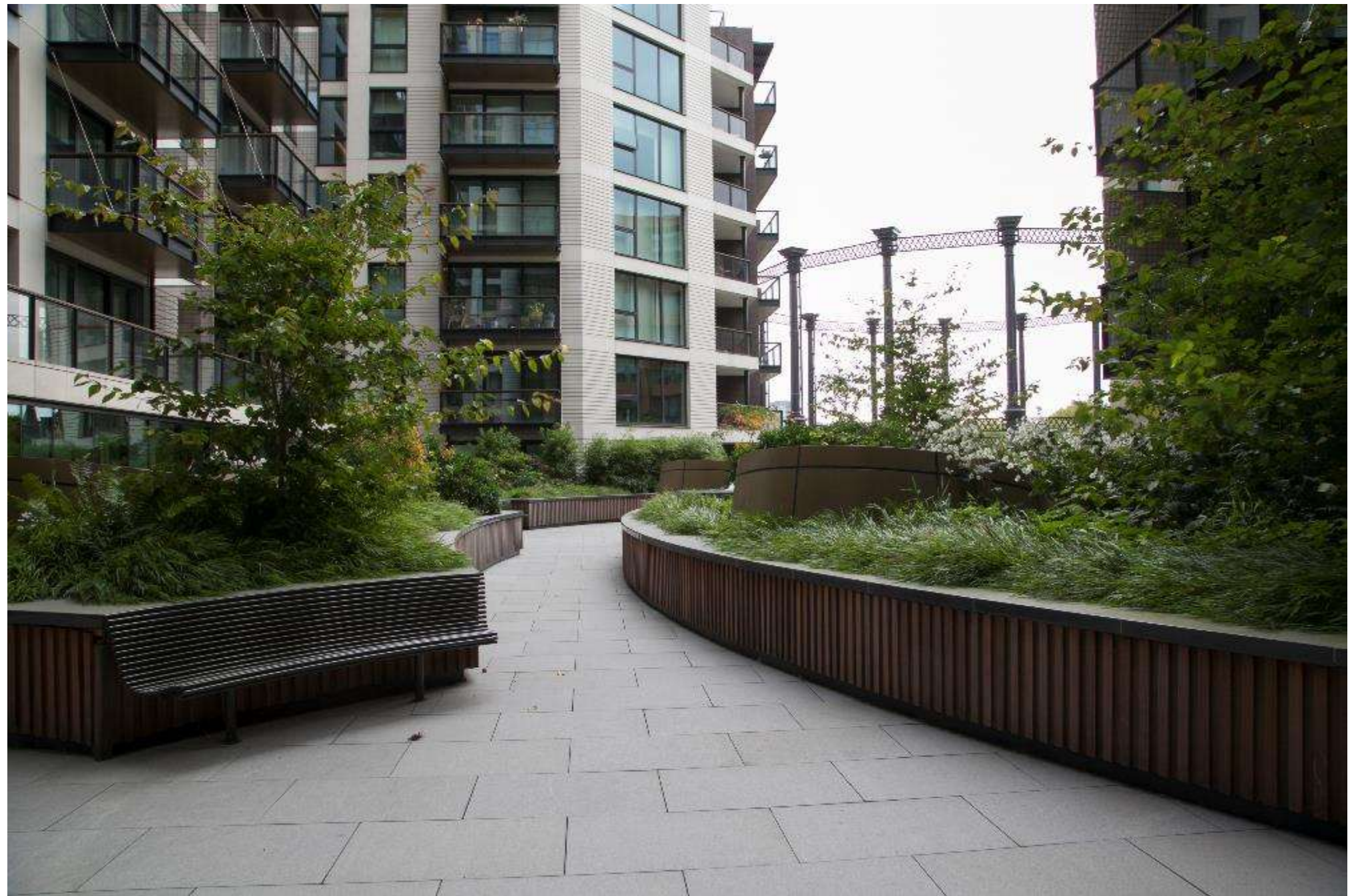
The Plimsoll Building



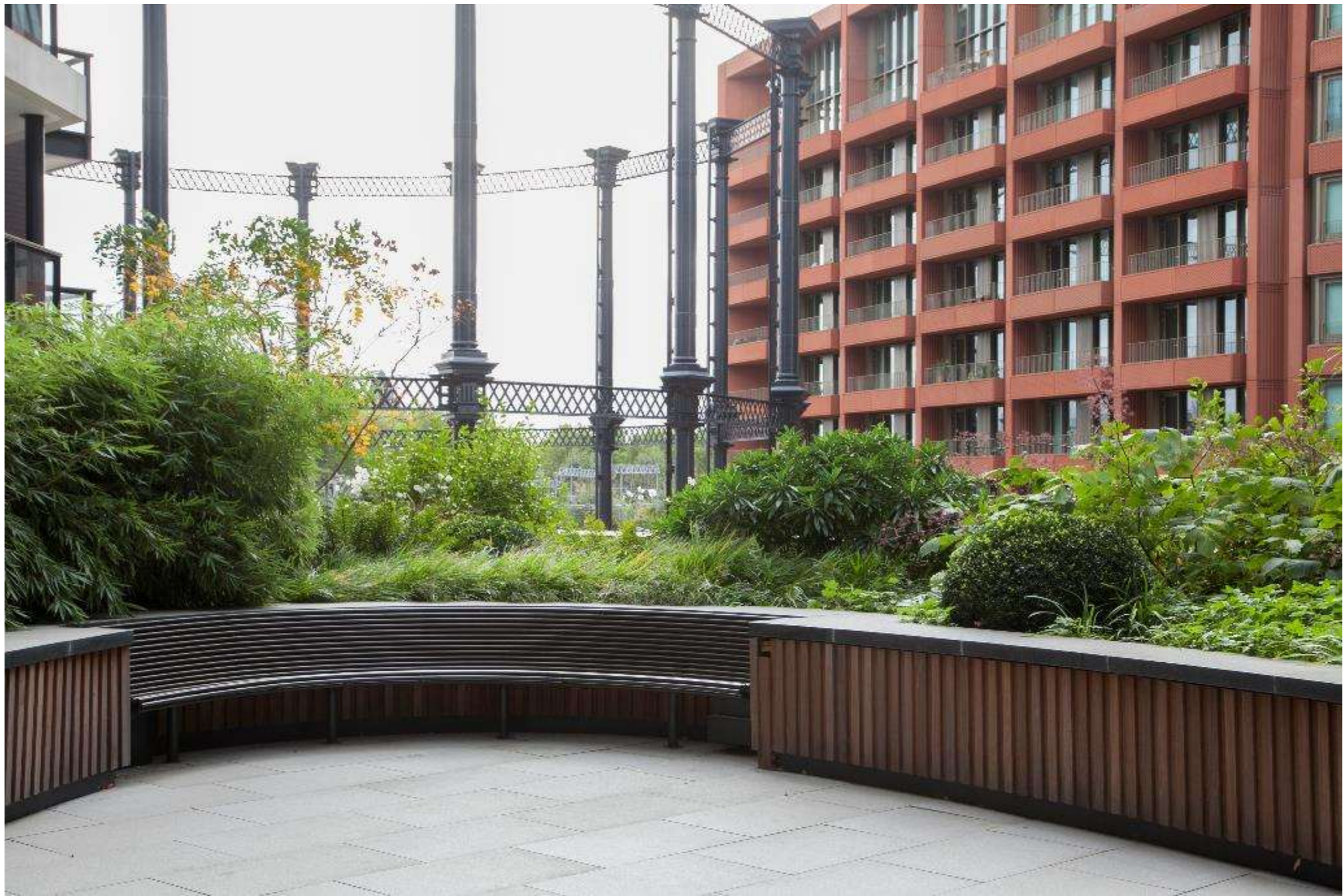






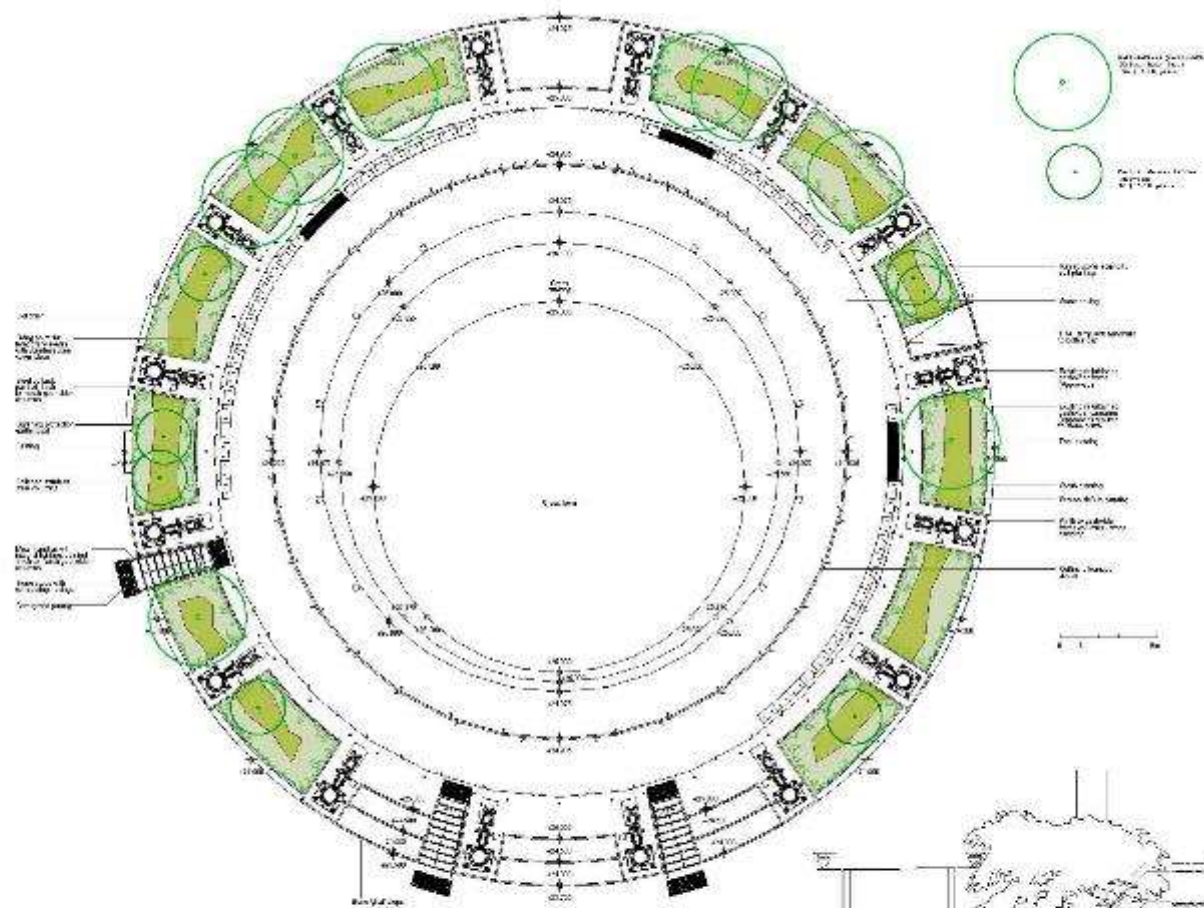






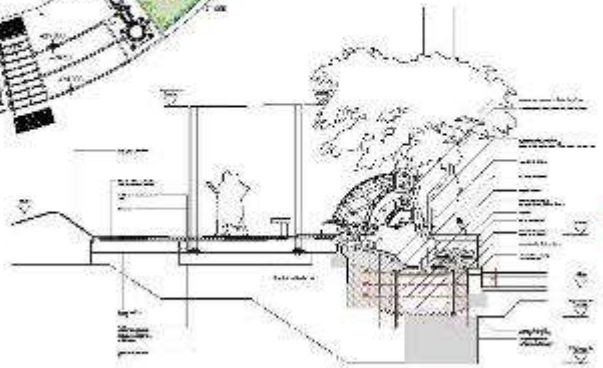
Gasholder Park
&
The Triplets





PROJECT: TRIP, DIBID 4
 FEDERAL PLANNING SCHEDULE

NO.	DESCRIPTION	DATE
1	PRELIMINARY DESIGN	1958
2	FINAL DESIGN	1959
3	CONSTRUCTION	1960
4	OPERATION	1961
5	REPAIRS	1962
6	REPAIRS	1963
7	REPAIRS	1964
8	REPAIRS	1965
9	REPAIRS	1966
10	REPAIRS	1967
11	REPAIRS	1968
12	REPAIRS	1969
13	REPAIRS	1970
14	REPAIRS	1971
15	REPAIRS	1972
16	REPAIRS	1973
17	REPAIRS	1974
18	REPAIRS	1975
19	REPAIRS	1976
20	REPAIRS	1977
21	REPAIRS	1978
22	REPAIRS	1979
23	REPAIRS	1980
24	REPAIRS	1981
25	REPAIRS	1982
26	REPAIRS	1983
27	REPAIRS	1984
28	REPAIRS	1985
29	REPAIRS	1986
30	REPAIRS	1987
31	REPAIRS	1988
32	REPAIRS	1989
33	REPAIRS	1990
34	REPAIRS	1991
35	REPAIRS	1992
36	REPAIRS	1993
37	REPAIRS	1994
38	REPAIRS	1995
39	REPAIRS	1996
40	REPAIRS	1997
41	REPAIRS	1998
42	REPAIRS	1999
43	REPAIRS	2000
44	REPAIRS	2001
45	REPAIRS	2002
46	REPAIRS	2003
47	REPAIRS	2004
48	REPAIRS	2005
49	REPAIRS	2006
50	REPAIRS	2007
51	REPAIRS	2008
52	REPAIRS	2009
53	REPAIRS	2010
54	REPAIRS	2011
55	REPAIRS	2012
56	REPAIRS	2013
57	REPAIRS	2014
58	REPAIRS	2015
59	REPAIRS	2016
60	REPAIRS	2017
61	REPAIRS	2018
62	REPAIRS	2019
63	REPAIRS	2020
64	REPAIRS	2021
65	REPAIRS	2022
66	REPAIRS	2023
67	REPAIRS	2024
68	REPAIRS	2025
69	REPAIRS	2026
70	REPAIRS	2027
71	REPAIRS	2028
72	REPAIRS	2029
73	REPAIRS	2030



PROJECT: TRIP, DIBID 4
 FEDERAL PLANNING SCHEDULE
 NO. 100-100-100
 DATE: 1958
 DRAWN BY: [Name]
 CHECKED BY: [Name]
 APPROVED BY: [Name]
 TITLE: ARCHITECT
 FIRM: [Firm Name]
 ADDRESS: [Address]
 CITY: [City]
 STATE: [State]
 ZIP: [ZIP Code]





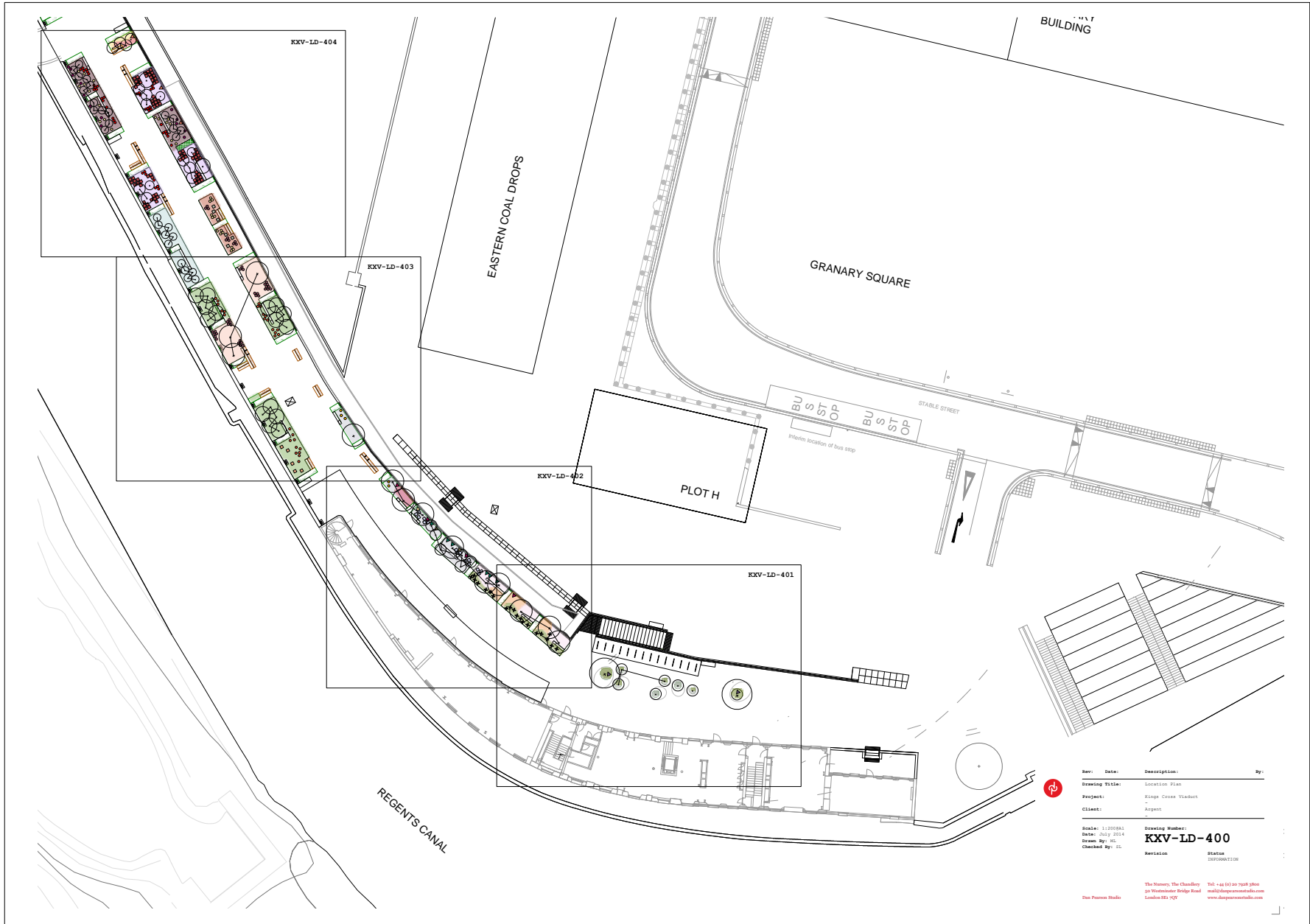






The Viaduct





Rev:	Date:	Description:	By:
Drawing Title: Location Plan			
Project: Kings Cross Viaduct			
Client: Argent			
Scale: 1:10000		Drawing Number:	
Date: July 2014		KKV-LD-400	
Drawn By: HL		Status:	
Checked By: SL		DEFINITION	

The Henry, The Chancellors
 30 Westminster Bridge Road
 London SE1 7UG

Tel: +44 (0) 20 7928 1800
 mail@henrychancellors.com
 www.henrychancellors.com

The Puma Studio









Amanyangyun

















